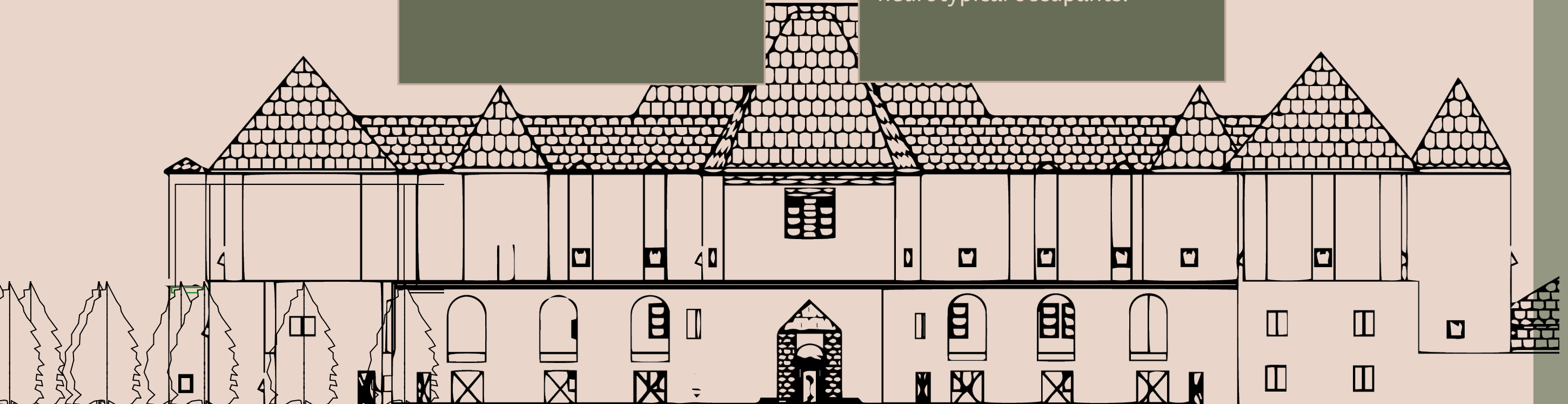


# RESTORATIVE WELLNESS RETREAT:

INCLUSION OF NEURODIVERGENT AND NEUROTYPICAL USERS

There are opportunities in historic buildings to address contemporary design standards to promote health and wellness for people.

The purpose of this study is to explore the intersection of historic elements in design and Well Design Standards such as community, materials, mind and movement in order to improve the environment for neurodivergent and neurotypical occupants.



How can the built environment be transformed to optimize people's health and well being?

### **WELL STANDARD**

"This popularity has spurred the rapid proliferation of green buildings globally, leading to enhanced human health and comfort and the reinvention of buildings that are beneficial not only for the planet, but also for the people inhabiting them"  
Naser, A. A., & Al-Mamoori, H. S. (2023)

How can a space be designed for all occupants health and wellness?

### **NEURODIVERGENT**

"To date, the junction of neuroscience and architecture has validated many of the disciplinary tenets of good urban design, such as the value of inhabitable edges and the importance of landmarks and patterns for orientation and navigation, as well as reinforcing the importance of direct and indirect connections with nature"  
Owen, C., & Crane, J. (2022)

How can historic design be preserved while meeting WELL design standards?

### **HISTORIC PRESERVATION**

"This underscores the notion that seasoned professionals hold a strong commitment to ensuring the structural soundness and safety of historical structures, possibly influenced by their exposure to a spectrum of structural challenges and complexities over the course of their careers."

## **LITERATURE RESEARCH**



# OHEKA CASTLE

- Built in 1915
- Oheka Castle is now a hotel consisting of 32 guest rooms
- Second largest private residence in America
- 109,000 Square feet
- Historic values
- Victorian Era/French style chateau
- Greenhouses



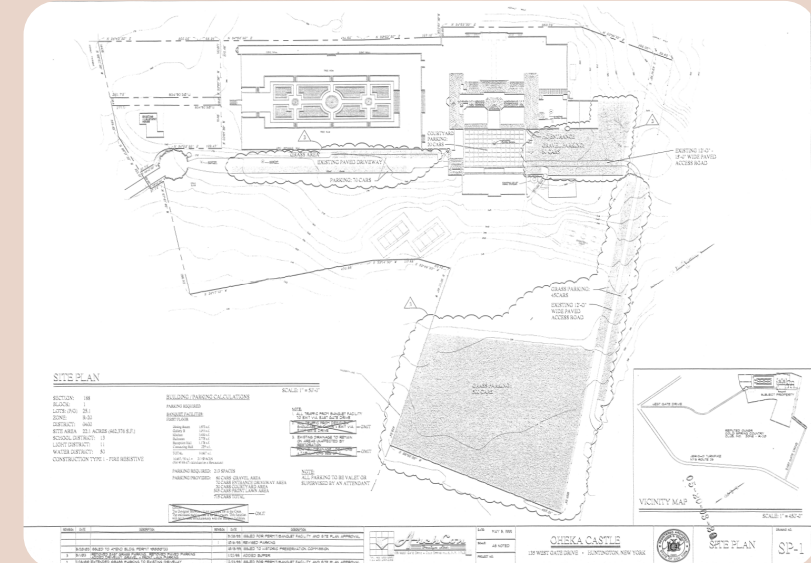
Aerial view



Exterior photo



Perspective view

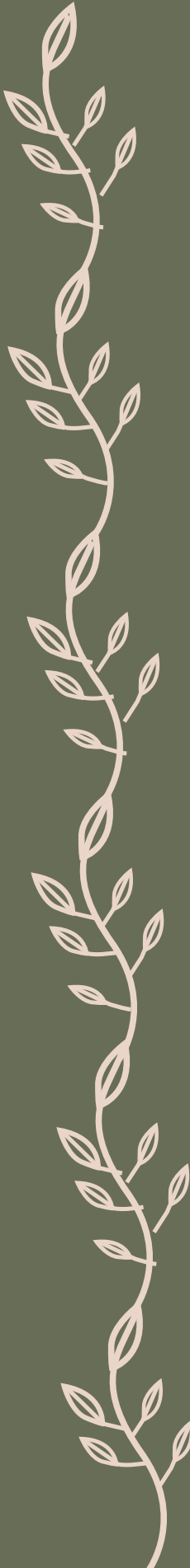


Site plan



Historical photo

PROJECT SITE





This is Long Island the shape highlighted is Huntington



This is Huntington and the other towns of Long Island

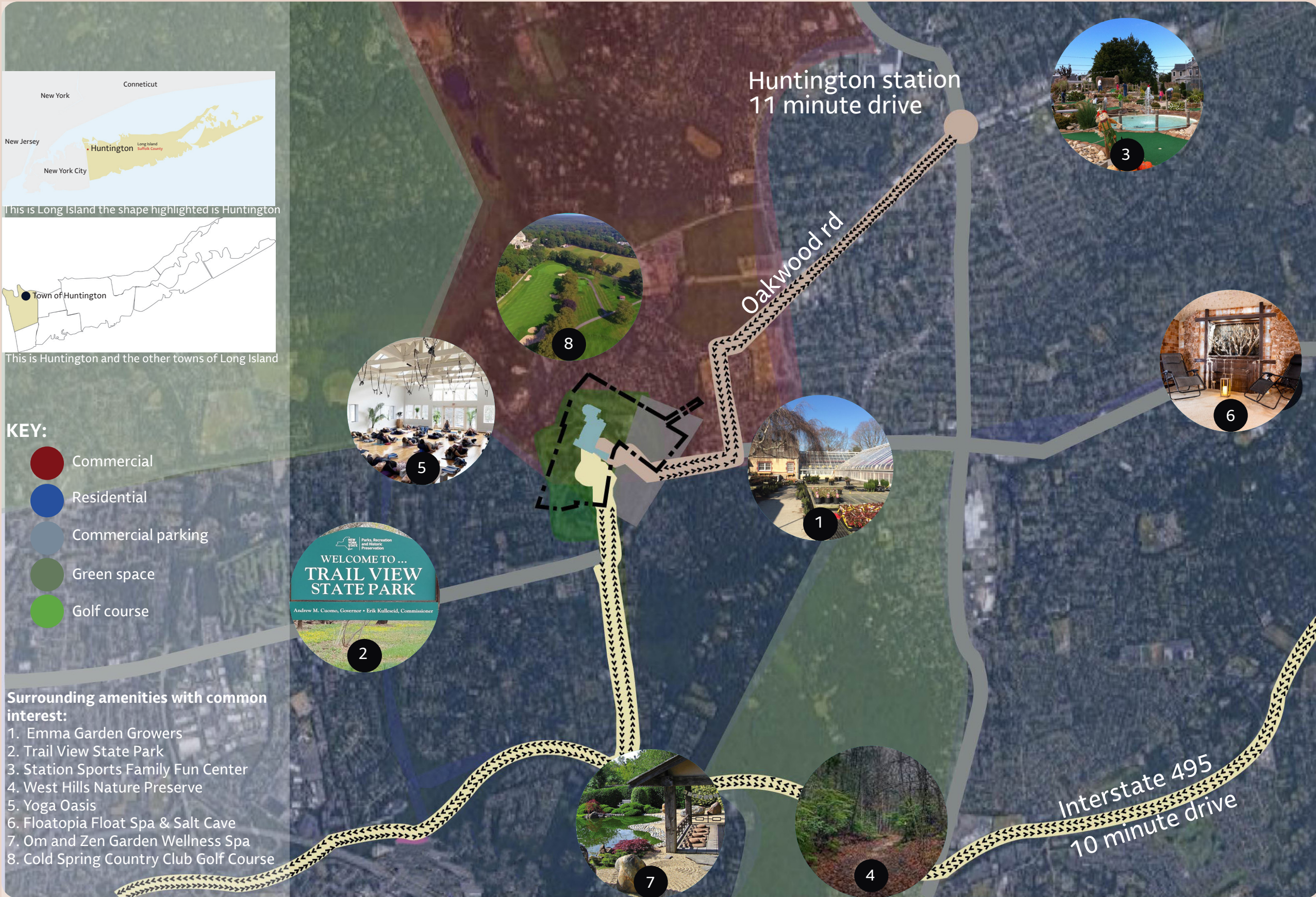
**KEY:**

-  Commercial
-  Residential
-  Commercial parking
-  Green space
-  Golf course



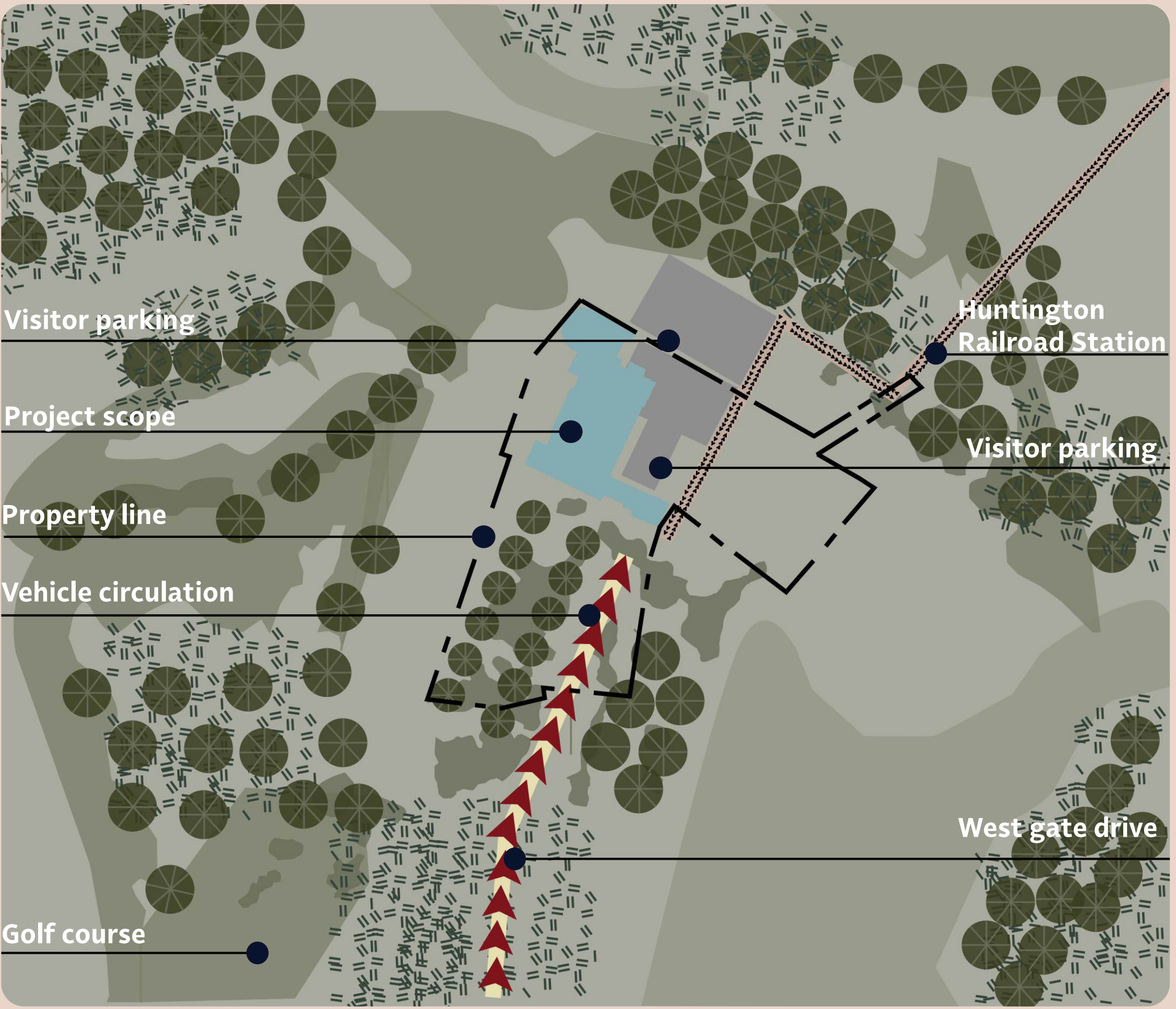
**Surrounding amenities with common interest:**

1. Emma Garden Growers
2. Trail View State Park
3. Station Sports Family Fun Center
4. West Hills Nature Preserve
5. Yoga Oasis
6. Floatopia Float Spa & Salt Cave
7. Om and Zen Garden Wellness Spa
8. Cold Spring Country Club Golf Course



**SITE LOCATION**





Visitor parking

Project scope

Property line

Vehicle circulation

Golf course

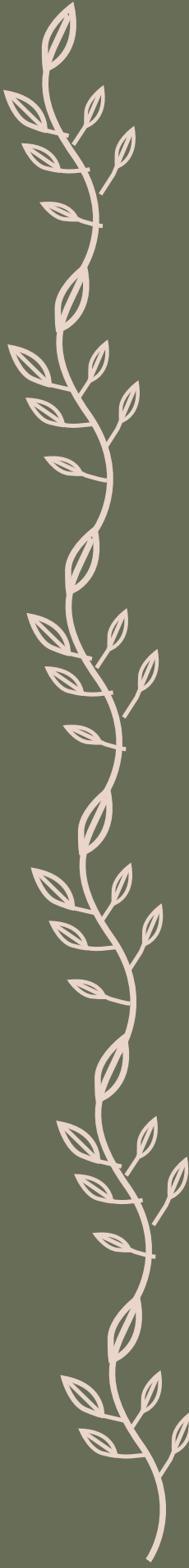
Huntington  
Railroad Station

Visitor parking

West gate drive



# SITE ANALYSIS

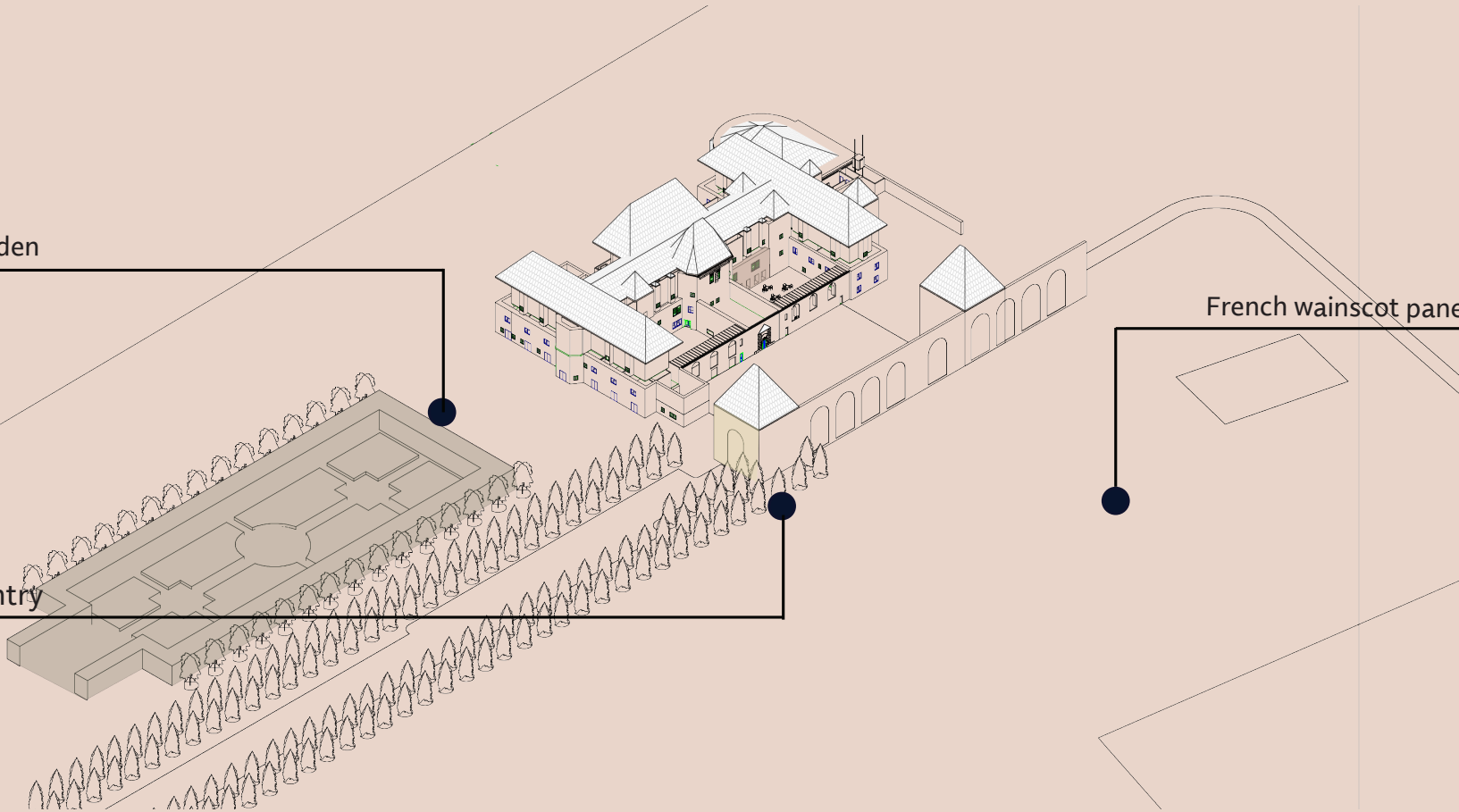




Outdoor garden



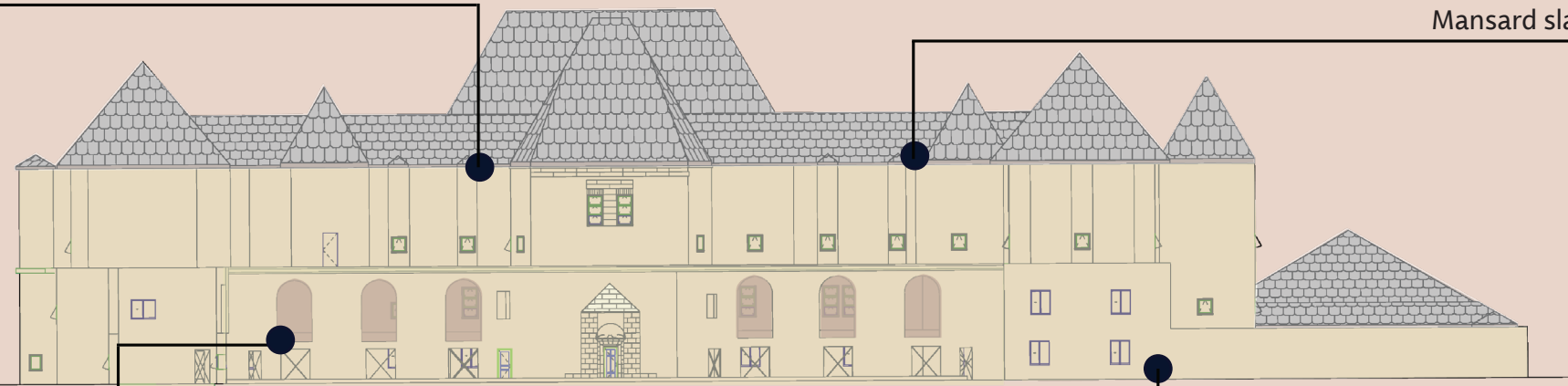
Arched entry



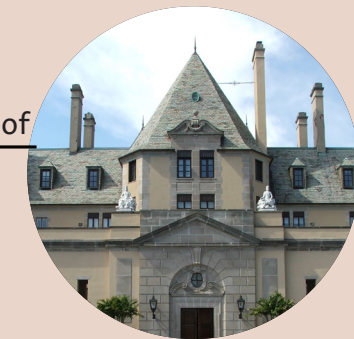
French wainscot paneling



Post and beam cathedral ceiling

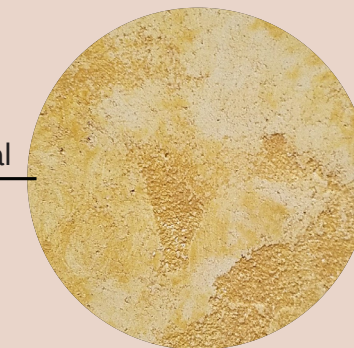


Mansard slate roof

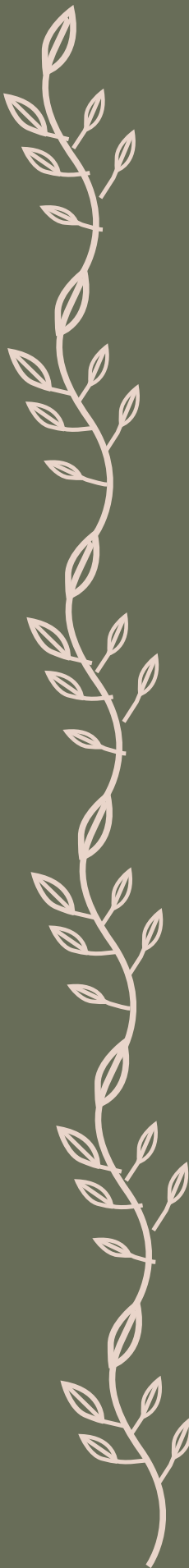


Arches

Provence gold stucco exterior material



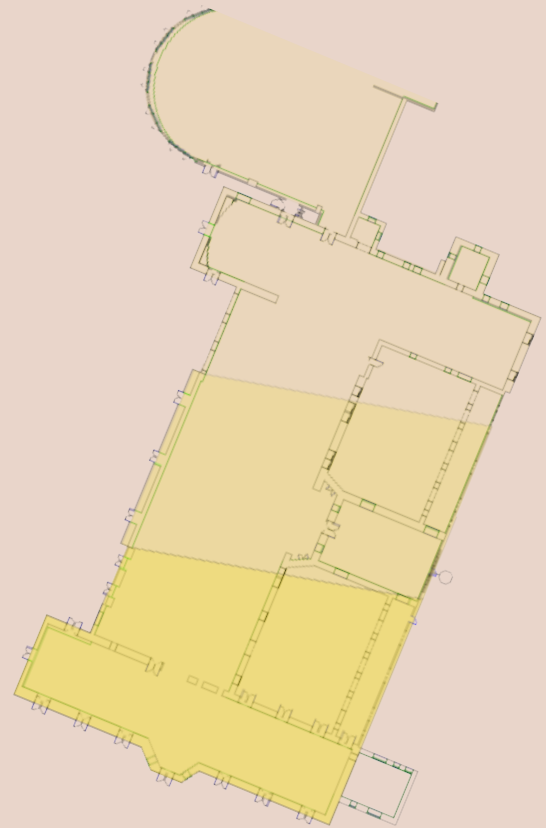
# HISTORIC PRESERVATION



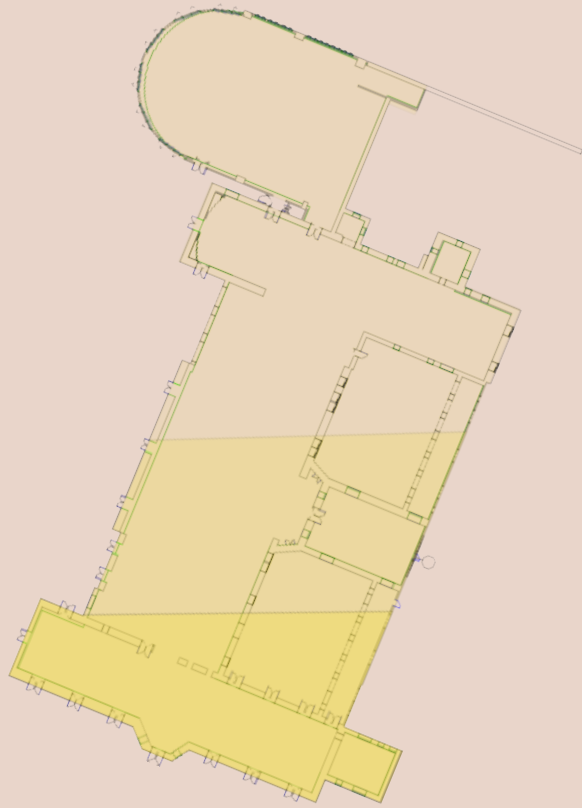
KEY:

-  Most sun
-  Average sun
-  Least sun

WINTER SOLSTICE



SUMMER SOLSTICE



SUN STUDIES





**ED ROBERT CAMPUS**



Utilized air quality, natural light, nature and accessibility in the space to satisfy the needs of neurodivergent people on campus.

- 1. Materials**
- 2. Community**



**WESTMARK SCHOOL**



A nature based environment for neurodiverse students to prevent the creation of overstimulating environments.

- 1. Mind**
- 2. Movement**



**ASID HEADQUARTERS**



The ASID headquarters is the first office to achieve WELL and LEED certification. It focuses on flexibility, collaboration, sustainability, and occupant well being.

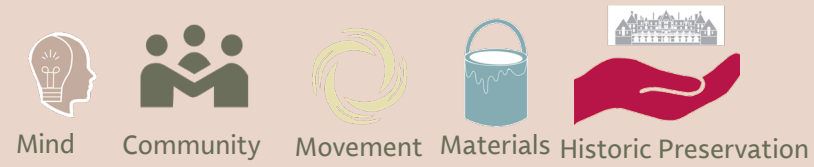
- 1. Materials**
- 2. Community**

**PRECEDENT STUDY**





## Qualitative:



## Quantitative:

Sensory Room (1)



Living Units/hotel (1) Prototype



Reception (1)



Library (1)



Meditation/yoga room (1)



Locker Rooms (1)



Restaurant (1)



Kitchen (1)



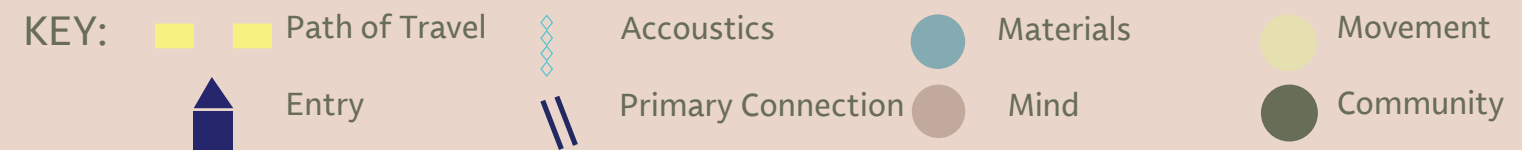
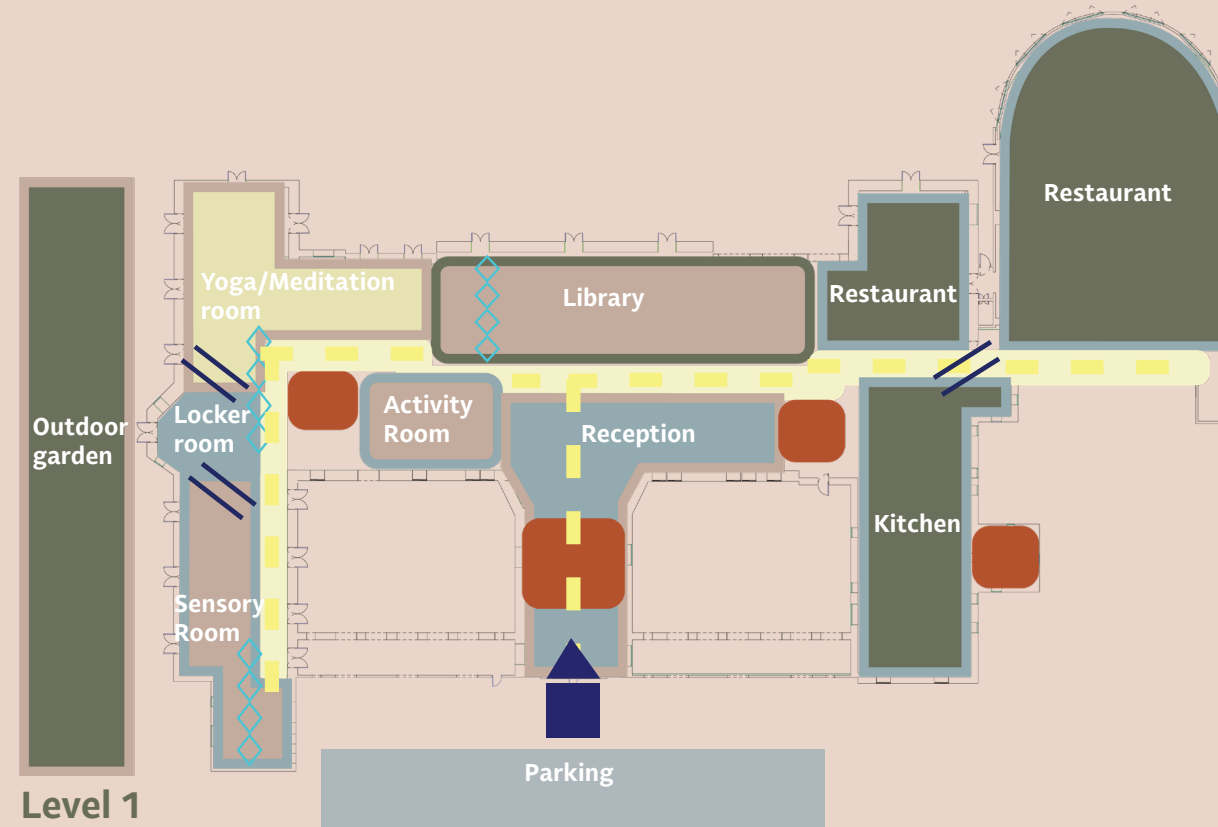
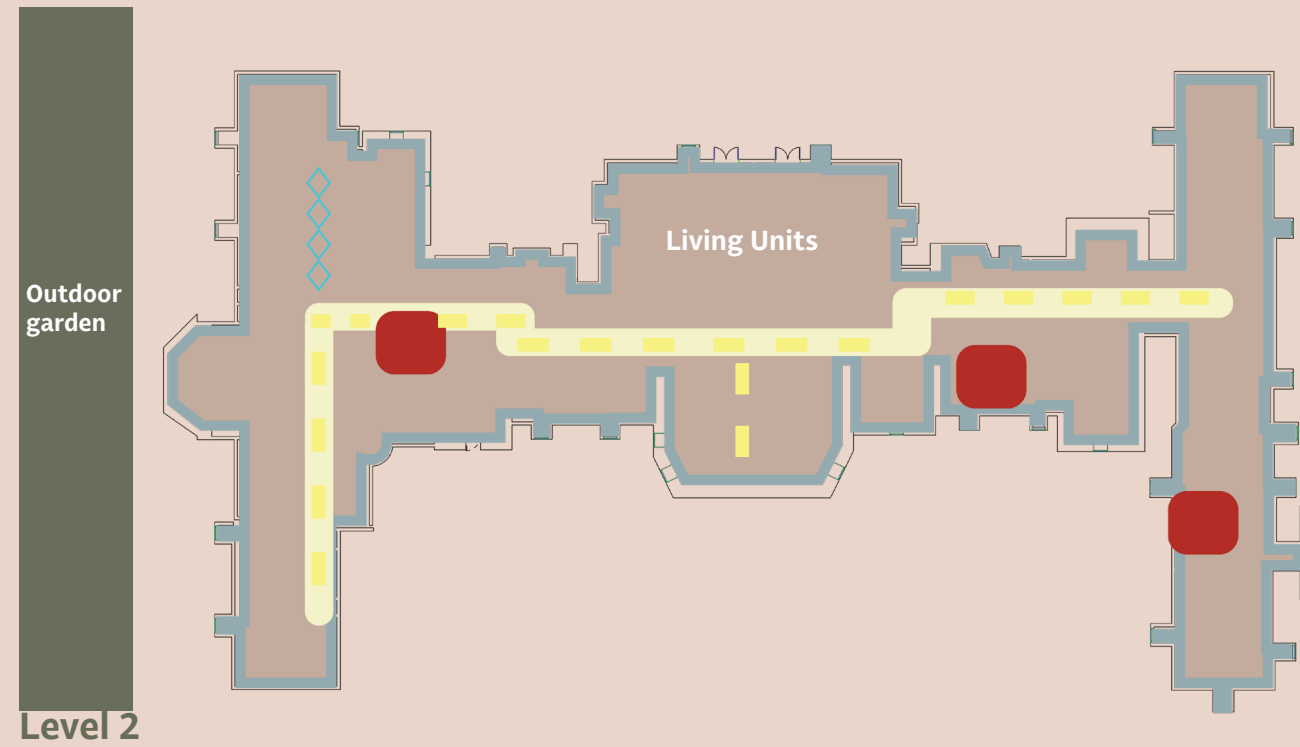
Activity Room (1)



Outdoor Garden(1)



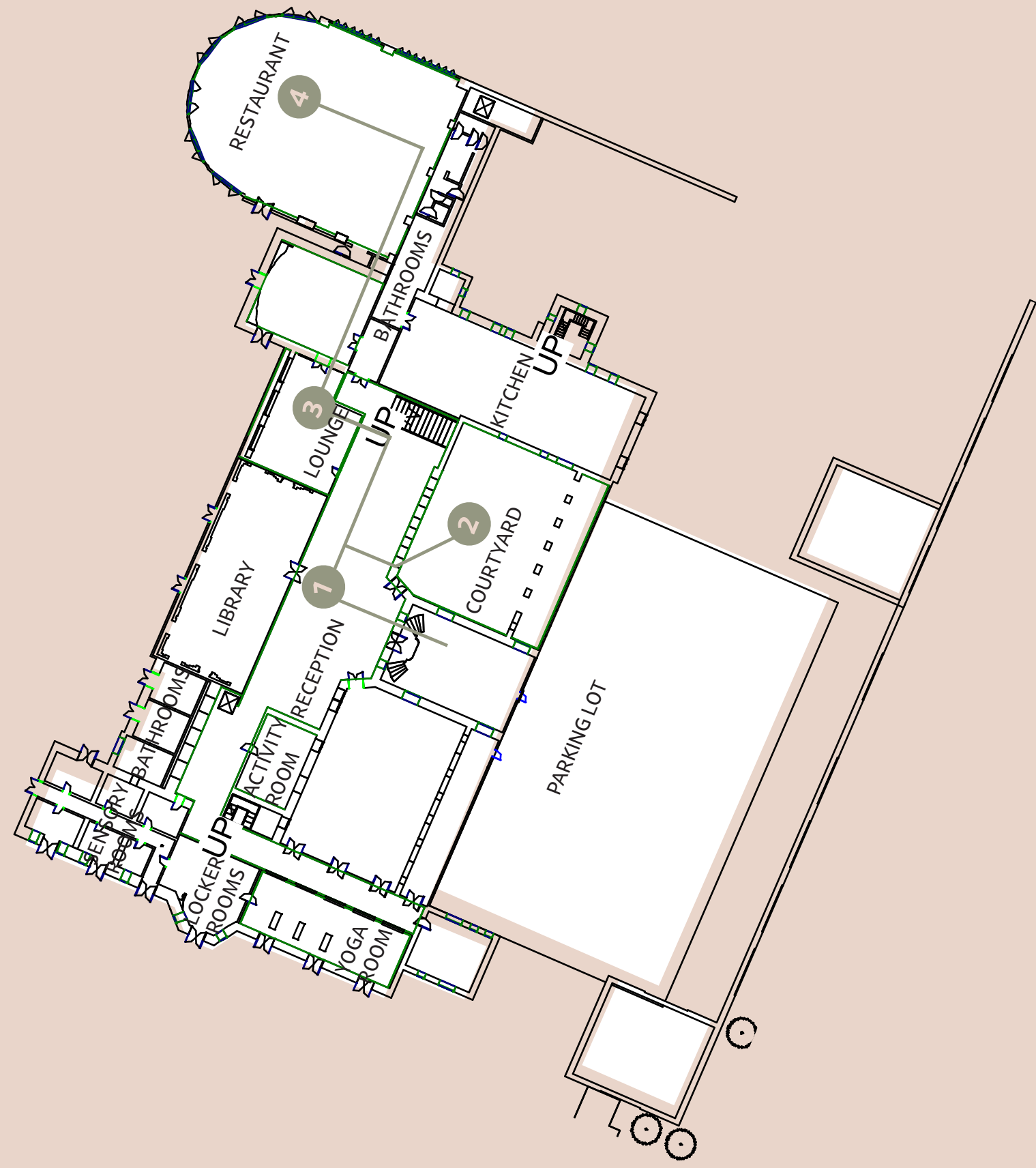
Design statement: Quiet and private spaces near areas with ample view



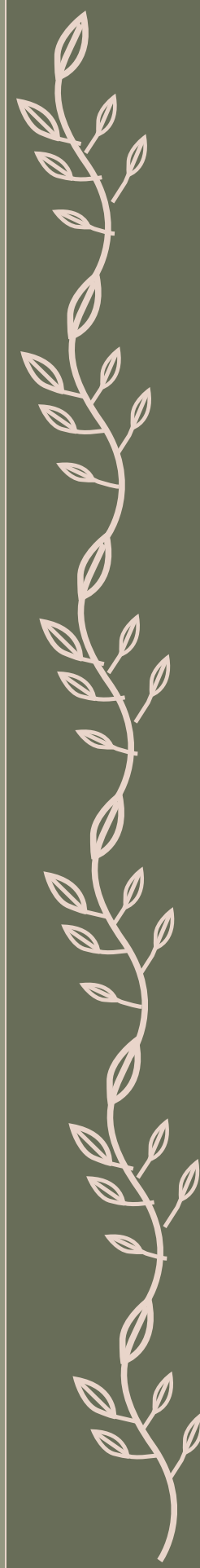
SITE + PROGRAM



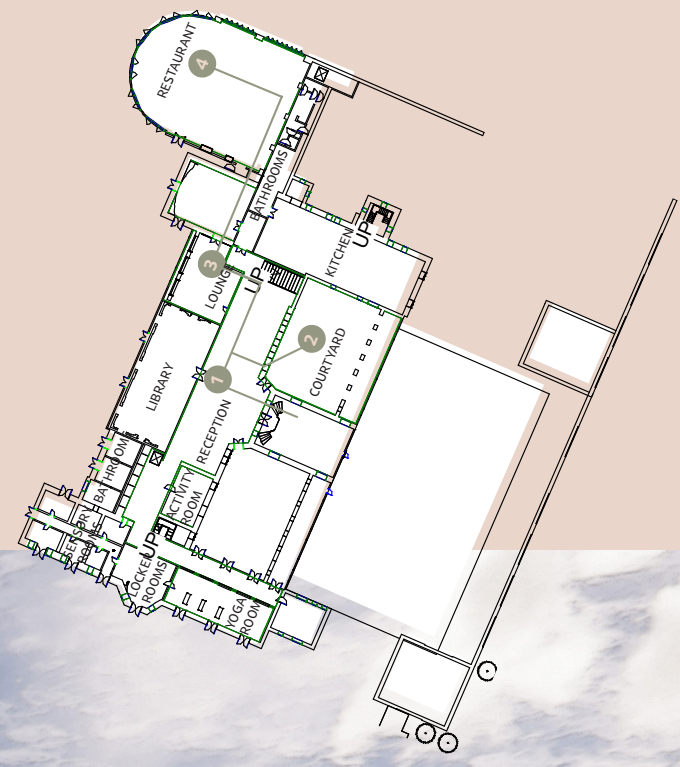
# OVERNIGHT GUEST EXPERIENCE



## OVERNIGHT GUEST EXPERIENCE



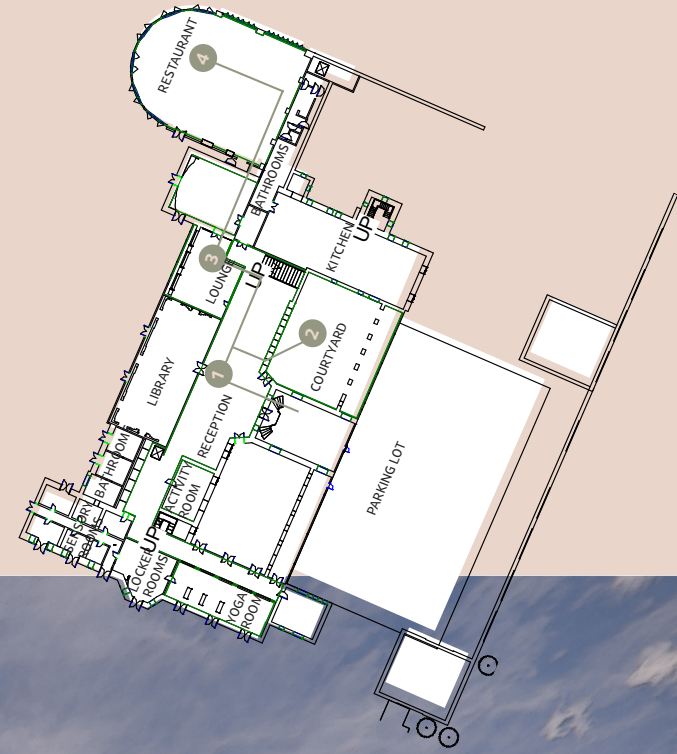
# DRIVEWAY ENTRY



OVERNIGHT GUEST EXPERIENCE



# ENTRY



Slate Roof

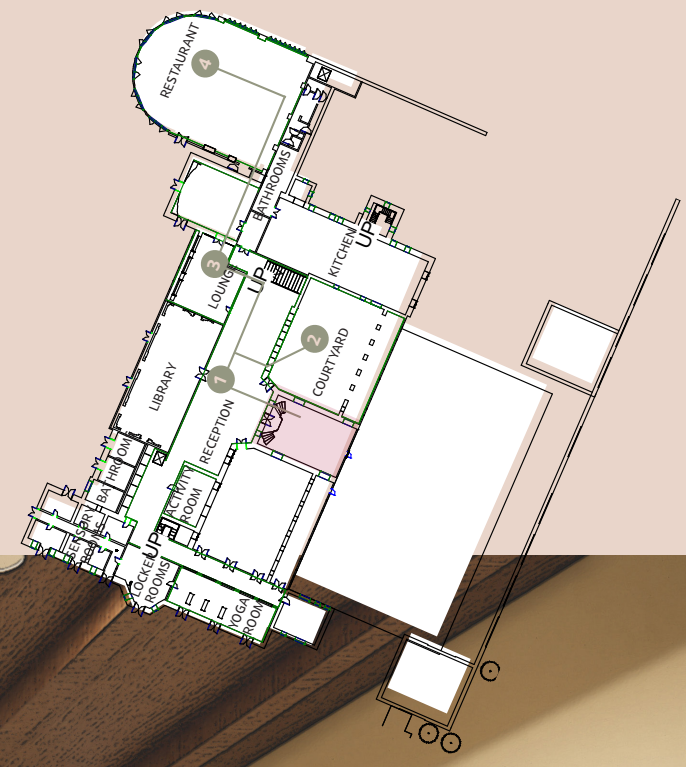


Provence gold stucco

OVERNIGHT GUEST EXPERIENCE



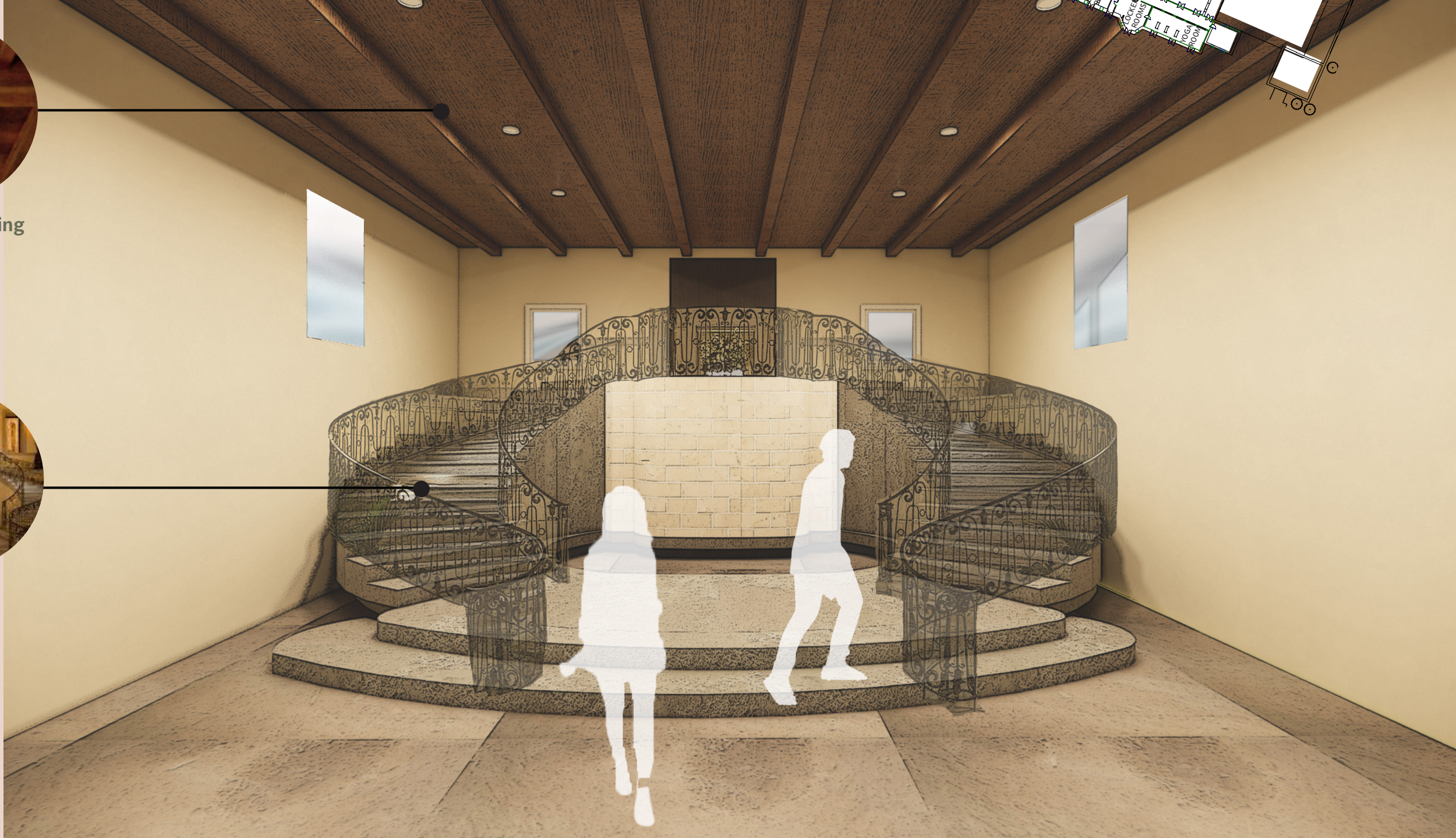
# STAIRS



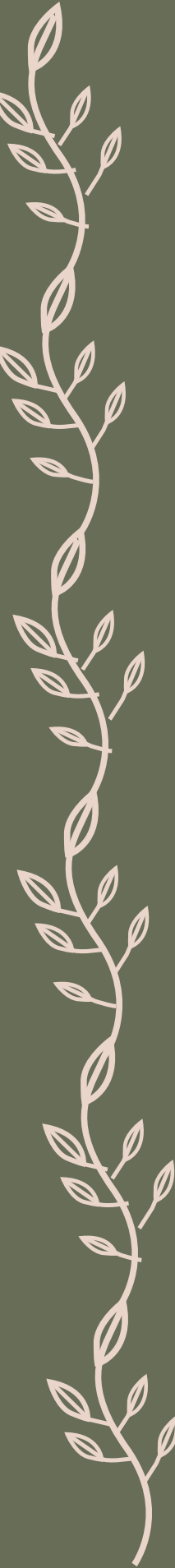
Wood linear ceiling



Grand staircase



OVERNIGHT GUEST EXPERIENCE



# RECEPTION



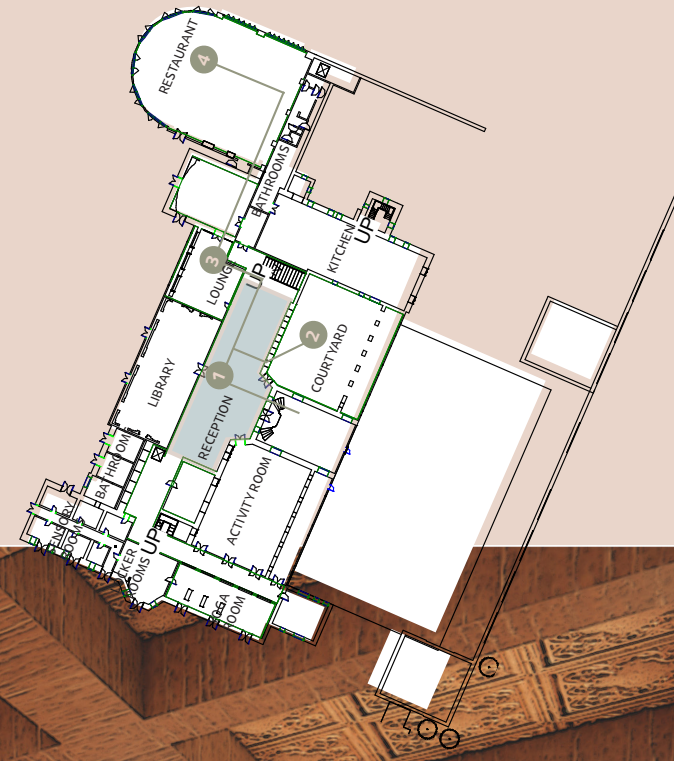
Wood grid ceiling



Shaw Contract  
Interstellar color contrast



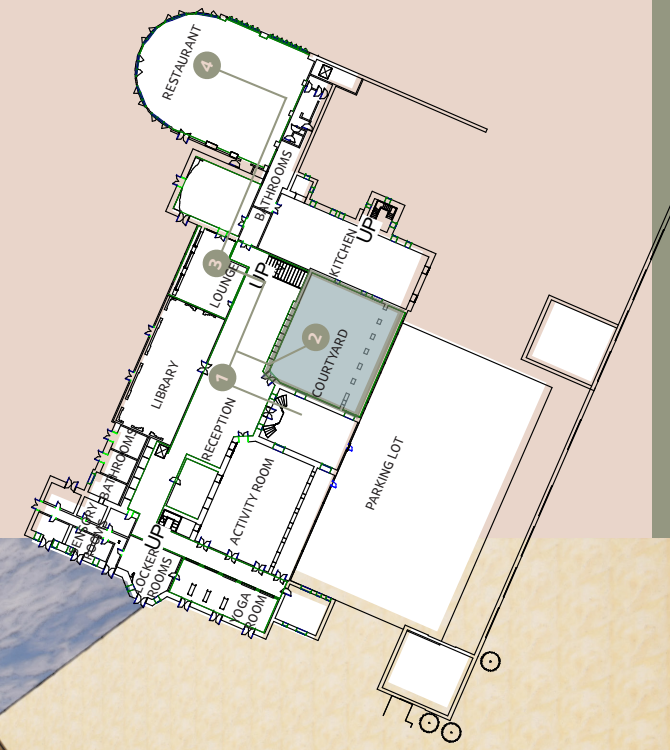
Sarracolin versailles granite



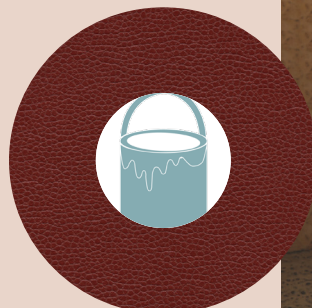
OVERNIGHT GUEST EXPERIENCE



# COURTYARD



Historic preserved arches

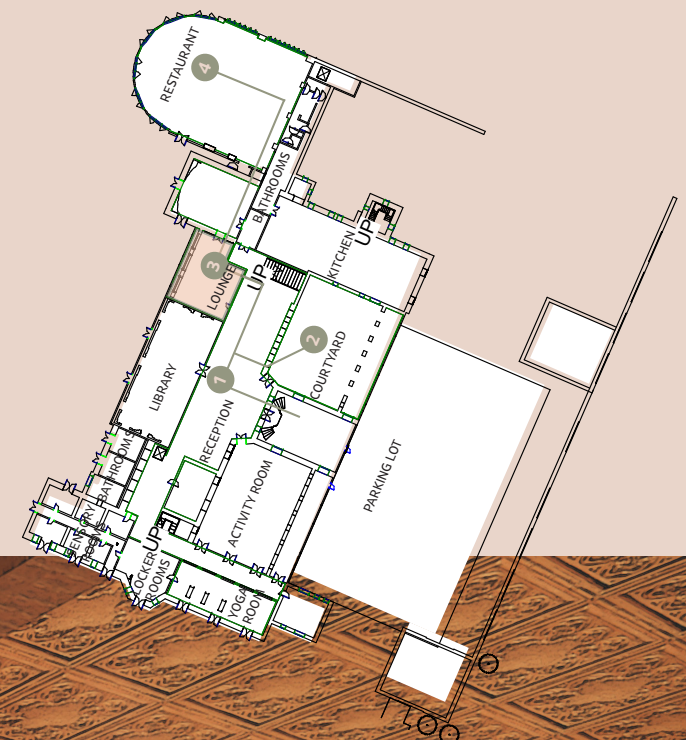


UltraFabrics ruma red

OVERNIGHT GUEST EXPERIENCE



# LOUNGE



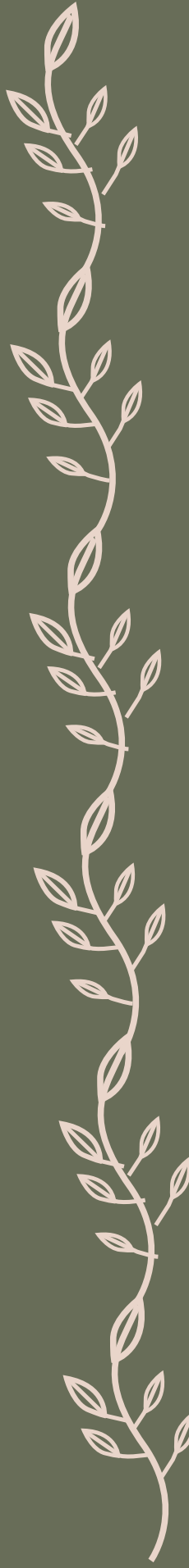
French wainscott paneling



Mind



OVERNIGHT GUEST EXPERIENCE





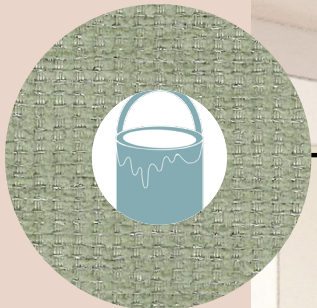
# RESTAURANT



Coved ceiling



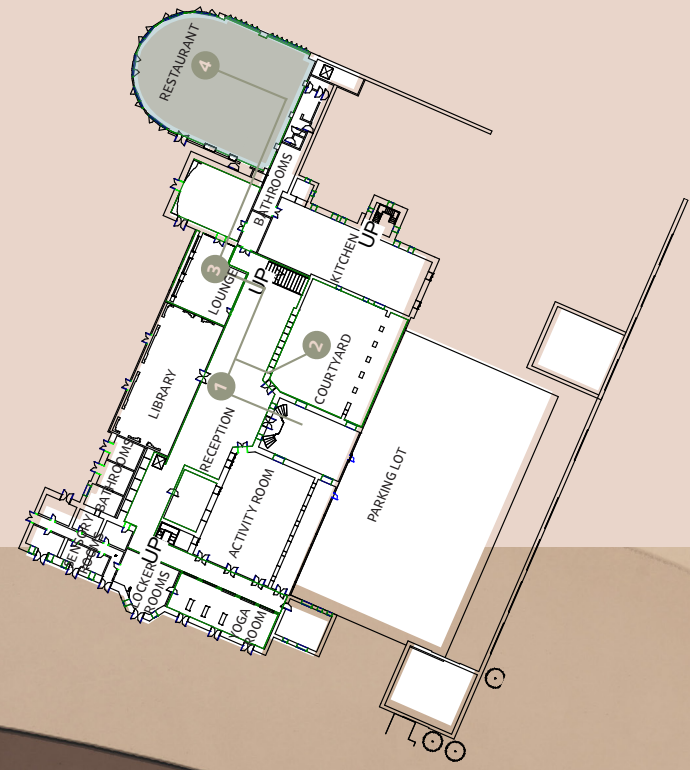
Community



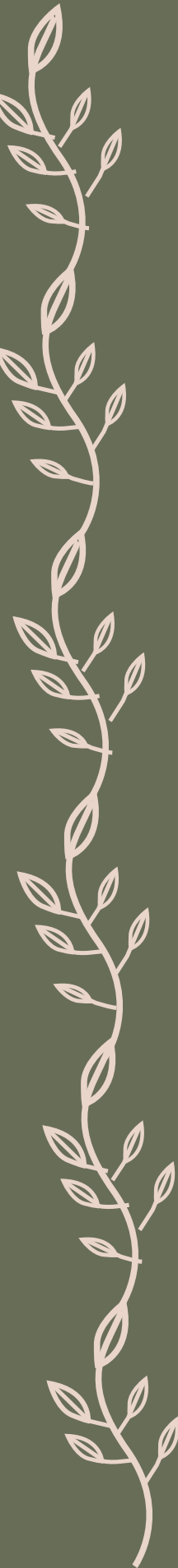
Momentum green tea



Momentum harbor grey



OVERNIGHT GUEST EXPERIENCE





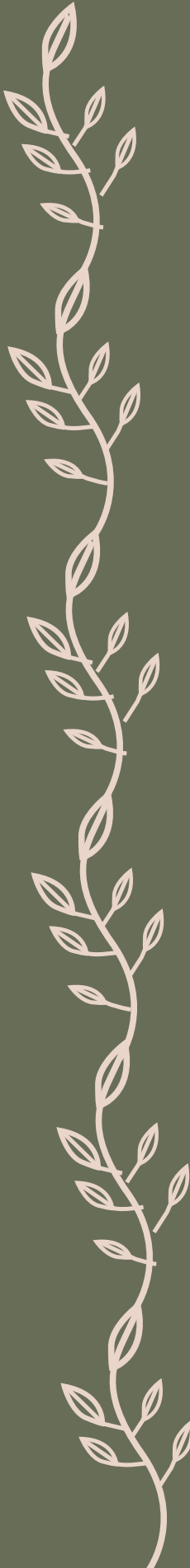
# HALLWAY



Wood grid ceiling



1 DAY VISITOR EXPERIENCE



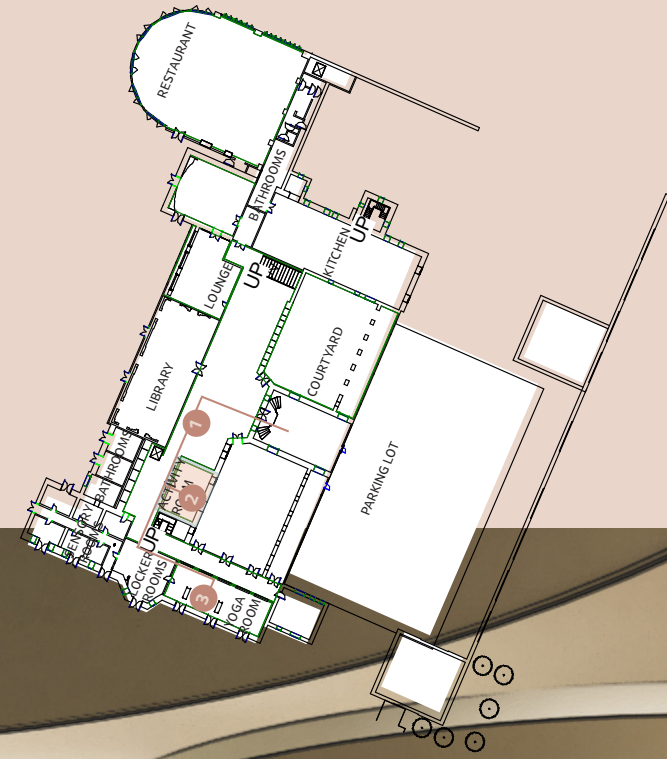
# ACTIVITY ROOM



Acoustic solutions



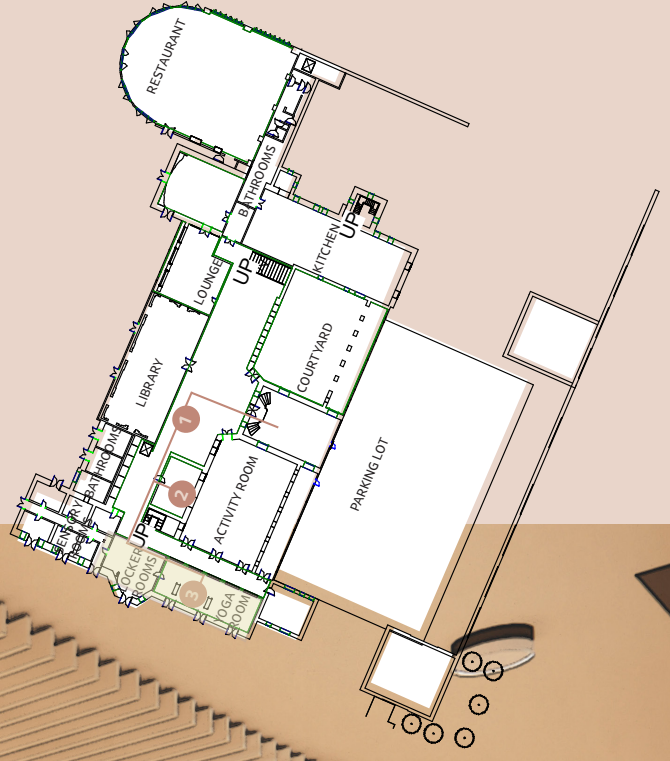
Shaw Contract Interstellar Carpet



1 DAY VISITOR EXPERIENCE



# YOGA/MEDITATION ROOM



Arched mirrors



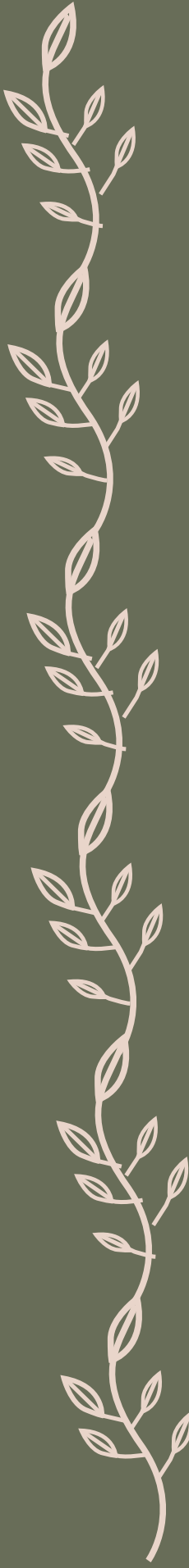
Movement



Mind



1 DAY VISITOR EXPERIENCE



THANK YOU!



# Literature Review

AKTUNA, M. E. (2023). The divergent perspectives of Civil Engineers and architects in historic building restoration: A comparative analysis. *Cultural Heritage and Science*, 4(2), 78–87. <https://doi.org/10.58598/cuhes.1354966>

Alam, M. (2023). Biophilic architecture and designs for mental well-being. *IOP Conference Series: Earth and Environmental Science*, 1218(1), 012020. <https://doi.org/10.1088/1755-1315/1218/1/012020>

Aldemir, G., Ergun, C., Cebi, F., & Erdogan, S. E. (2022). Examination of Gym Centre design criteria using multi-criteria decision analysis methodologies. *International Journal of Information and Decision Sciences*, 14(4), 345. <https://doi.org/10.1504/ijids.2022.10052394>

Bala, N. (n.d.). Color Schemes in Landscape Design: Color Theory Schemes in Landscape Design: Color Theory Color Schemes in Landscape Design: Color Theory. *COLOR SCHEMES IN LANDSCAPE DESIGN: COLOR THEORY COLOR SCHEMES IN LANDSCAPE DESIGN*.

Benton, L., Vasalou, A., Khaled, R., Johnson, H., & Gooch, D. (2014). Diversity for design. *Proceedings of the SIGCHI Conference on Human Factors in Computing Systems*. <https://doi.org/10.1145/2556288.2557244>

Book, K., & Högdahl, E. (2022). Equalizer: Breaking down the barriers at informal outdoor sport and recreational spaces. *Leisure Studies*, 1–17. <https://doi.org/10.1080/02614367.2022.2088833>

Dalay, Lay. (2020). The Impact of Biophilic Design Elements On The Atmospheric Perception Of The Interior Space.

Dalay, Lâl, & Aytaç, G. (2022). Biophilic Design. *Emerging Approaches in Design and New Connections With Nature*, 1–19. <https://doi.org/10.4018/978-1-7998-6725-8.ch001> Divers, E. (2023). Theory to practice: pleasure-arousal-dominance (PAD) theory for architectural color design. *Color Research & Application*, 48(5), 445–452. <https://doi.org/10.1002/col.22847>

Fu, W., Ran, C., Huang, J., Chen, Z., Fan, S., Fang, W., Ye, M., Dong, J., Yao, X., & Chen, Z. (2023). Can acoustic indices reflect the characteristics of public recreational behavioral in urban green spaces? *Ecological Indicators*, 154, 110729. <https://doi.org/10.1016/j.ecolind.2023.110729>

Habbak, A. L., & Khodeir, L. (2023). Multi-sensory interactive interior design for enhancing skills in children with autism. *Ain Shams Engineering Journal*, 14(8), 102039. <https://doi.org/10.1016/j.asej.2022.102039>

Kamisiński, T., Kulowski, A., & Kinasz, R. (2016). Can historic interiors with large cubature be turned acoustically correct? *Archives of Acoustics*, 41(1), 3–14. <https://doi.org/10.1515/aoa-2016-0001>

Narenthiran, O. P., Torero, J., & Woodrow, M. (2022). Inclusive Design of workspaces: Mixed methods approach to understanding users. *Sustainability*, 14(6), 3337. <https://doi.org/10.3390/su14063337>

Naser, A. A., & Al-Mamoori, H. S. (2023). The role of interior design in achieving healthy workplaces according to lighting indicators of “Well standard.” *International Journal of Safety and Security Engineering*, 13(5), 953–963. <https://doi.org/10.18280/ijss.130519>

Owen, C., & Crane, J. (2022). Trauma-informed design of supported housing: A scoping review through the lens of Neuroscience. *International Journal of Environmental Research and Public Health*, 19(21), 14279. <https://doi.org/10.3390/ijerph192114279>

Sas-Nowosielski, K., & Szopa-Wiśnios, S. (2023). Usage patterns, exercise motives, and perceived benefits and limitations of outdoor gyms: A case from a provincial city in South Poland. *The New Educational Review*, 73(3), 81–94. <https://doi.org/10.15804/tner.23.73.3.06>

Tosic, J. (2016). Perfumed historic buildings: Issues of authenticity. *Spatium*, (36), 92–99. <https://doi.org/10.2298/spat1636092t>

## Precedent Studies

International Well Building Institute. (n.d.). <https://resources.wellcertified.com/articles/asid-washington-d-c/> ASID headquarters becomes world's first space to earn LEED and well platinum certification. *Interior Design*. (2022, November 2).

<https://interiordesign.net/designwire/asid-headquarters-becomes-world-s-first-space-to-earn-leed-and-well-platinum-certification/>

ASID HQ first space in the world to earn LEED and well platinum. *American Society of Interior Designers*. (n.d.). <https://www.asid.org/news/asid-headquarters-in-washington-d-c-is-first-space-in-the-world-to-earn-both-leed-and-well-platinum-certification-under-well-building-standard-v1>

Westmark Lower School. *Fast + Epp*. (2023, March 2). <https://www.fastepp.com/portfolio/westmark-lower-school/>

Ben Dreith | 13 April 2022 Leave a comment. (2022, April 13). NBBJ designs net-zero School for Neurodiverse Children in California. *Dezeen*. <https://www.dezeen.com/2022/04/13/nbbj-net-zero-school-neurodiverse-children-california/>

Hickman, M. (2023, June 13). NBBJ unveils a nature-y Los Angeles campus for Neurodiverse Students. *The Architect's Newspaper*. <https://www.archpaper.com/2022/04/nbbj-unveils-los-angeles-campus-for-neurodiverse-students/>

Ed roberts campus. (n.d.). [https://www.c4at.org/ed\\_roberts\\_campus.html](https://www.c4at.org/ed_roberts_campus.html)

Henry, C. (2011, March 28). Ed roberts campus / LMS architects. *ArchDaily*. <https://www.archdaily.com/122507/ed-roberts-campus-leddy-maytum-stacy-architects> The Ed Roberts Campus - a universally designed, transit-oriented campus. *Ed Roberts Campus*. (2023, May 4). <https://www.edrobertscampus.org/>

Stouhi, D. (2022b, April 7). NBBJ is designing a nature-immersed net zero school in California for neurodiverse students. *ArchDaily*. <https://www.archdaily.com/979838/nbbj-is-designing-a-nature-immersed-net-zero-school-in-california-for-neurodiverse-students> Kullman,

Universal design ed roberts campus. *Ed Roberts Campus*. (2014, April 14). <https://www.edrobertscampus.org/design/>

# REFERENCES

