



Office Redesign
Brianna Starck

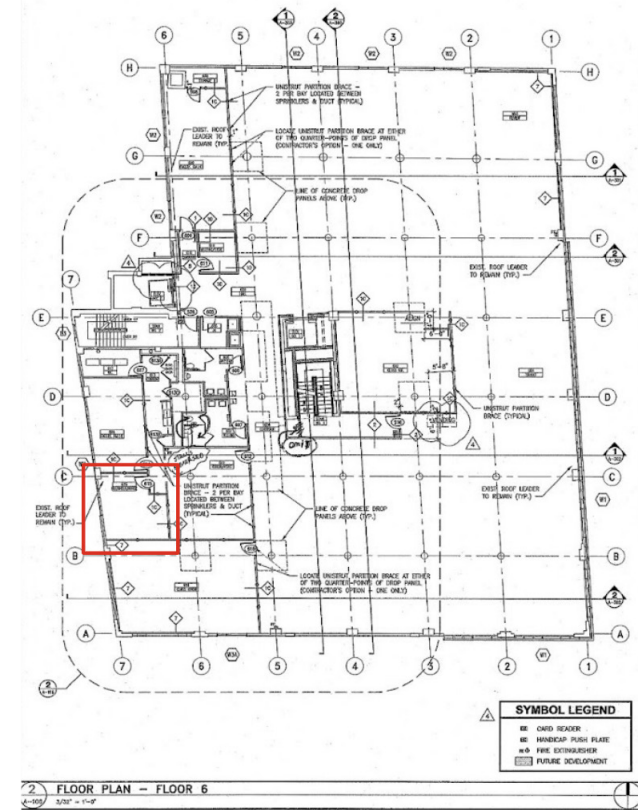
Project Summary

The project focused on renovating and improving the existing space by reshaping and resizing the space and changing the way the atmosphere communicates its design. I did this by making the space be a warm and well lit space, you are drawn further into the office by delicate textures and colors that instill a sense of calmness. Acoustical Ceiling Clouds combat the noise issues. A new furniture arrangement, revised lighting, and inviting material choices make this space both aesthetically and functionally purposeful.

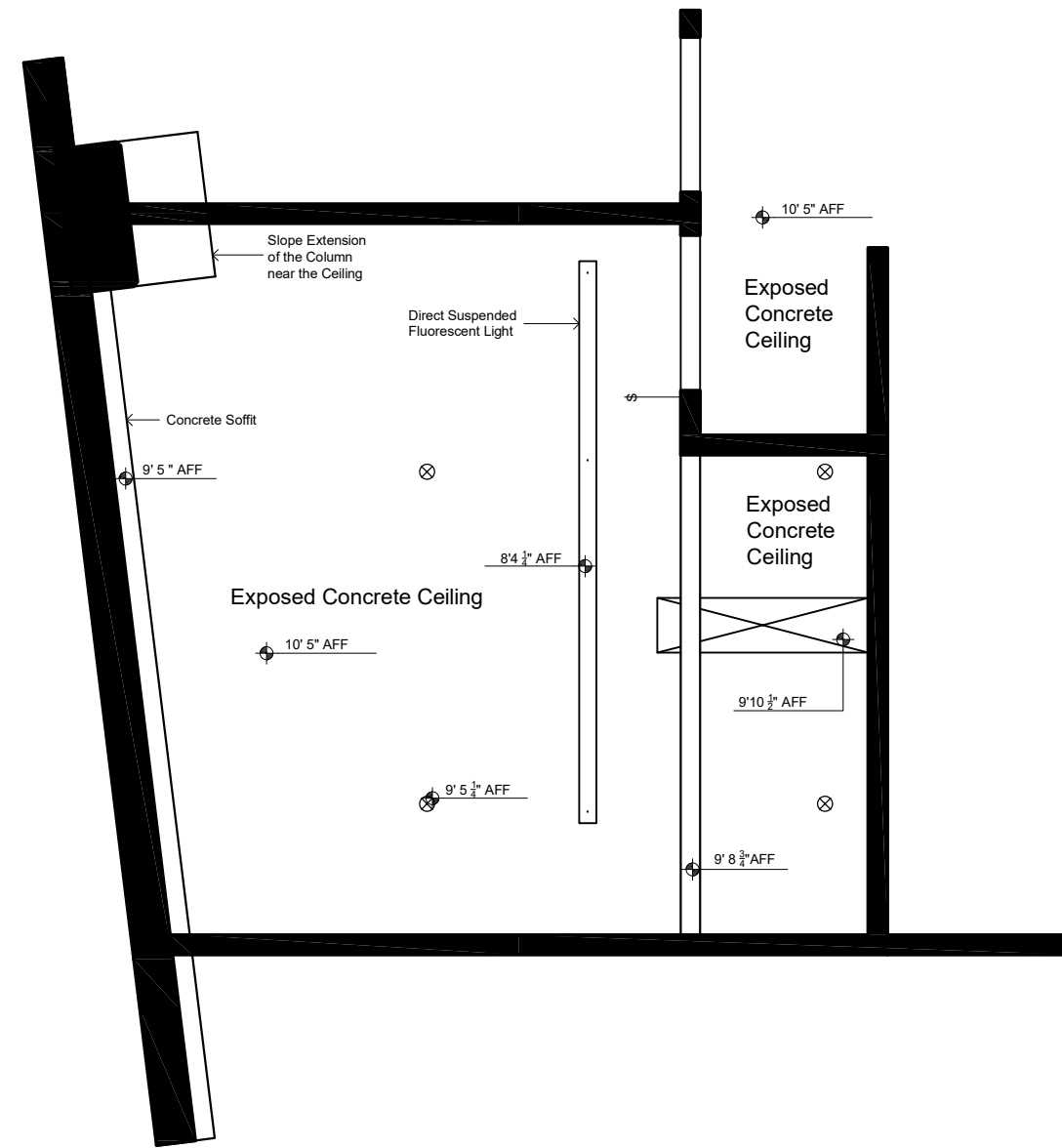
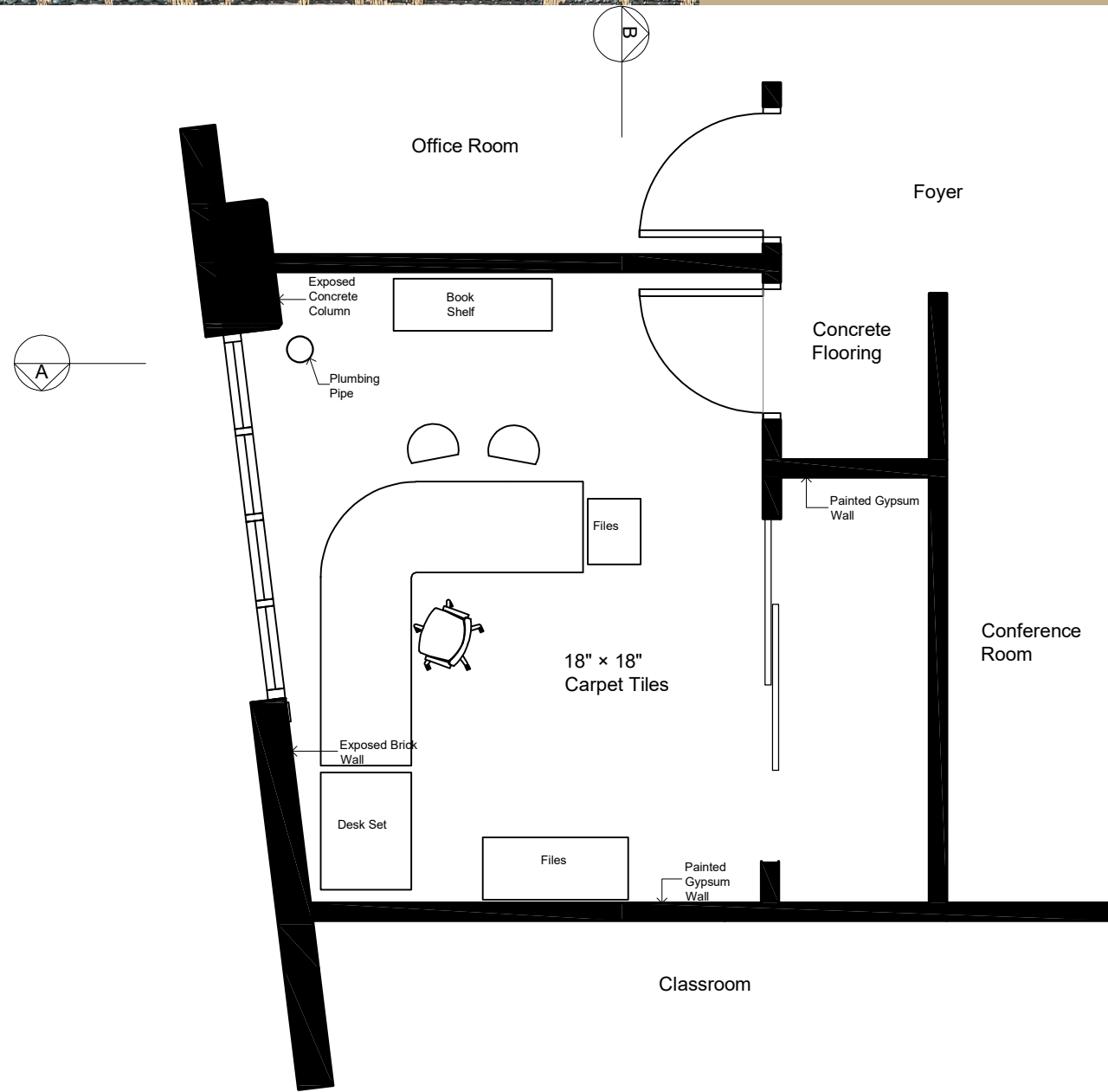
The office I renovated was located on the 6th floor and is Professor Dunhams office. While observign and measuring the space as a designer I worked to improve and identify issues that are in the current office. I worked on looking at the spaces problems and made solutions for them.



Location: Office located in the Nancy Cantor Warehouse in Armory Square Syracuse New York.



Existing Plan



Legend	
⊗	Sprinkler Heads
⊠	Vent
⚡	Light Switch/Motion Detector

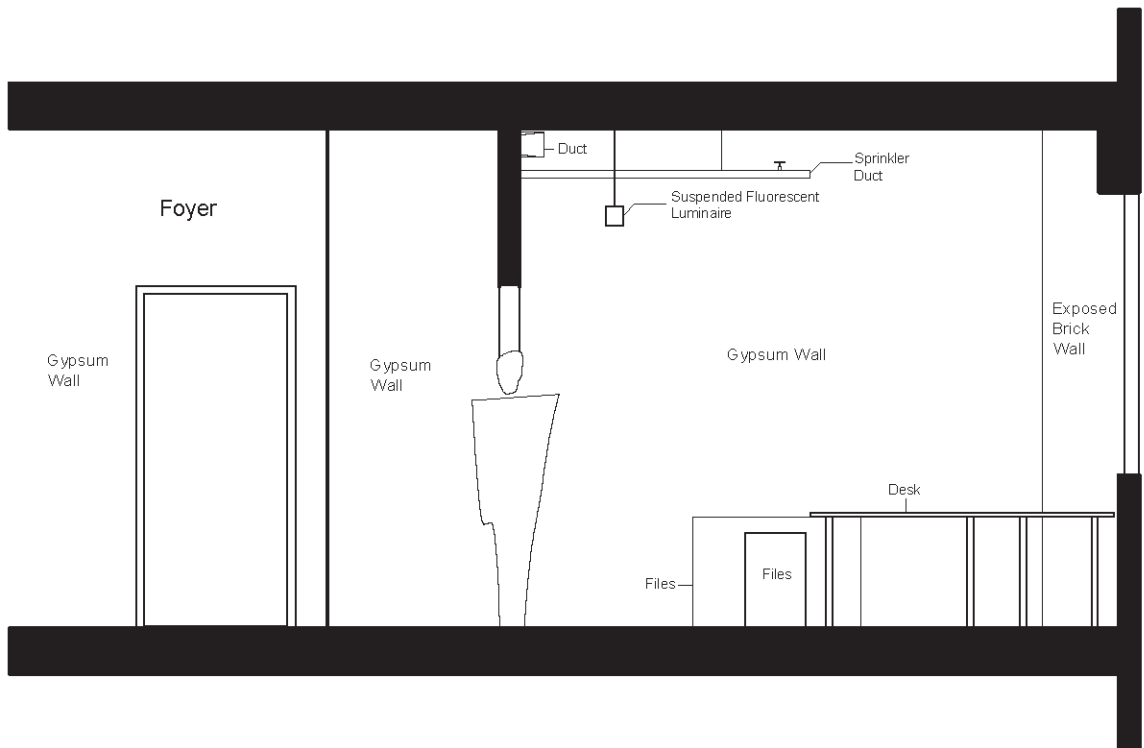
1 Existing Partial Floor Plan: Room 605A
Scale: 1"=0' 1/4"



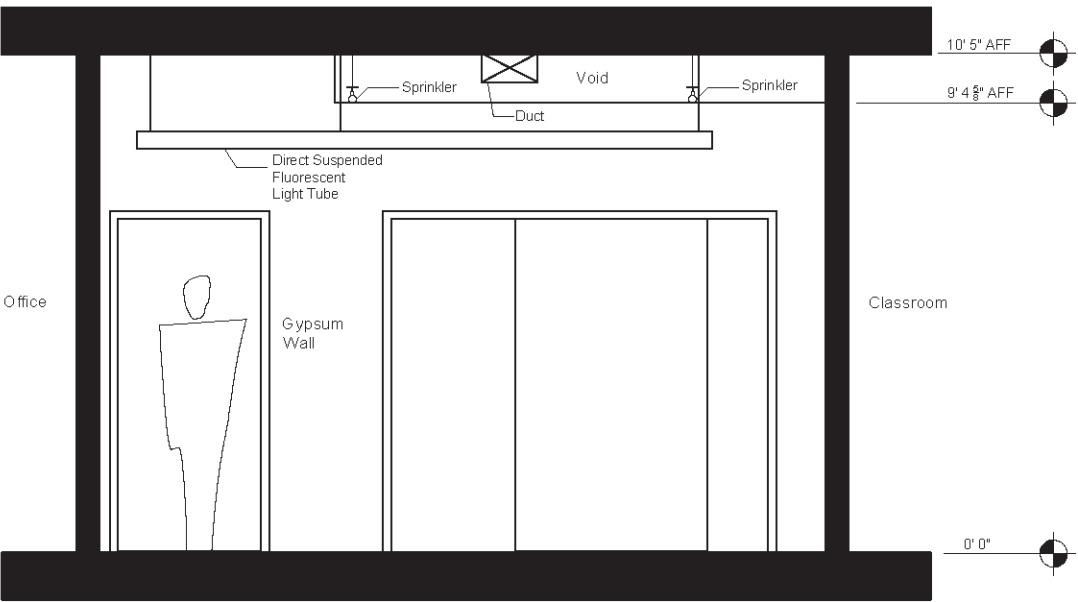
2 Existing Partial Reflected Ceiling Plan: Room 605A
Scale: 1"=0' 1/4"



Existing Section

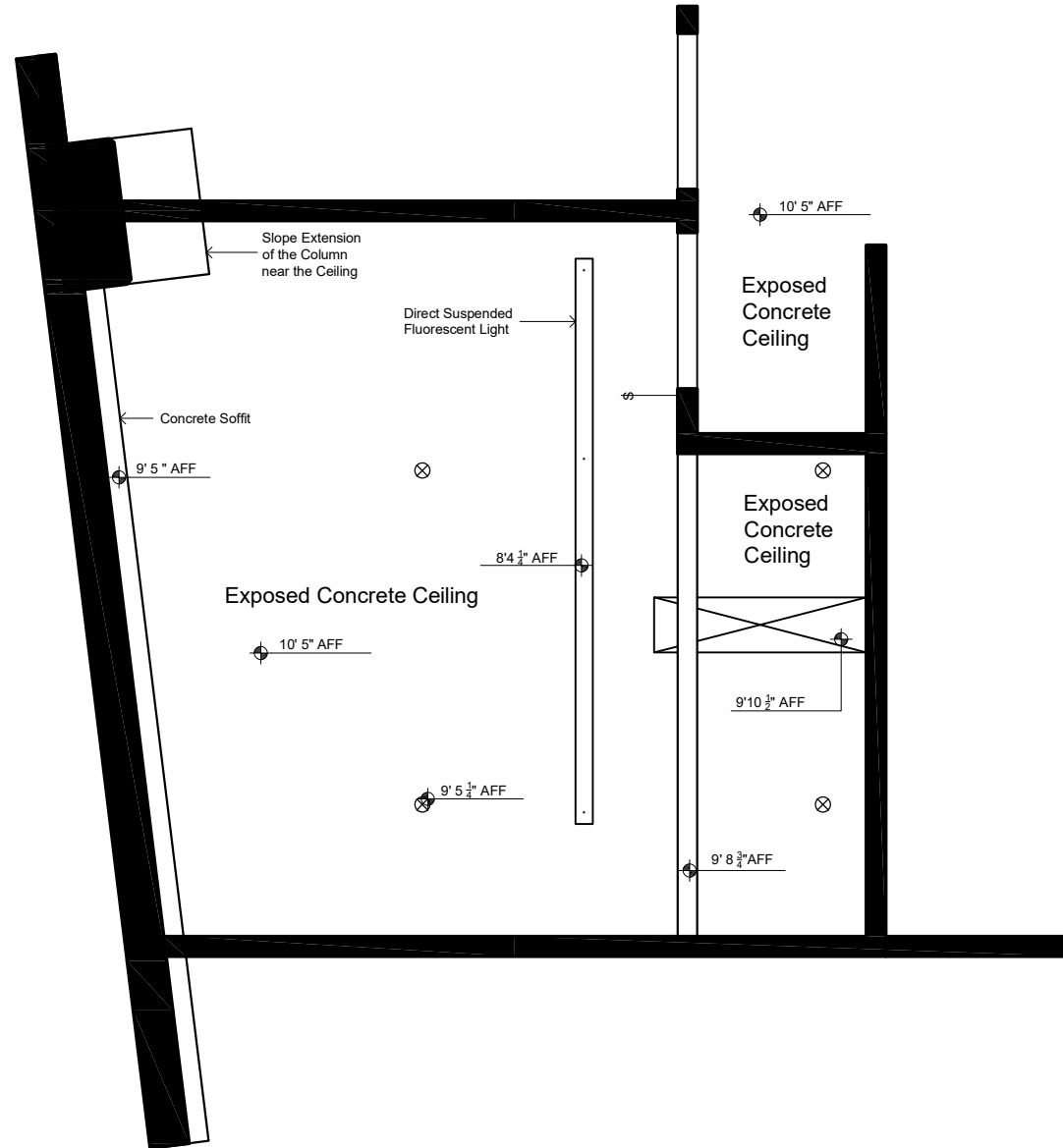


A Existing Section A: Room 805A
Scale: 1"=0' 1/4"



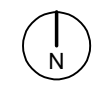
B Existing Section B: Room 805A
Scale: 1"=0' 1/4"

Existing RCP



Legend	
⊗	Sprinkler Heads
⊠	Vent
⊕	Light Switch/Motion Detector

2 Existing Partial Reflected Ceiling Plan: Room 605A
 Scale: 1"=0' 1/4"

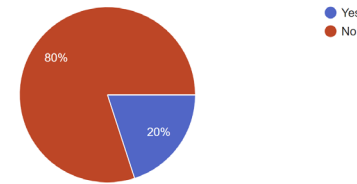


Research

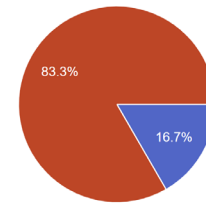
The research provided from the survey included that only 80% of people have been in Professor Dunham's office which relates to how it is a low activity space with not many people coming inside to work besides Professor Dunham. Only 16% of people said that the space was easy to access. The space requires walking in the opposite direction of the classroom in front of it and can seem to be hidden. Most people haven't been to Professor Dunham's office but those that have been there 4-10 times which makes me believe it was for a recurring reason. Half of the people have said that the lighting is effective. While observing Dunham's Office there is a broad window that looks out to the highway and it brings in a good amount of sunlight while working at her desk. In terms of AI lighting only 30% of people voted that there was efficient lighting. Only 30% of people believe that the AC functioning and heat system is efficient. The AC and heat functioning is the same amount of votes and this could result in not many people having knowledge on this information. While talking to Professor Dunham she explained how in the winter sometimes the heat is not strong enough to combat the cold weather. The place was given 33% for being a good place for studying and working. These results make me question people visiting the office understanding that it is very much limited to provide just for Professor Dunham and a small conference per say.

Many people cannot comment on the design being good because they either haven't been or they don't know. Two people said yes. People responded with how the space should be redesigned to be more visible and easier to find. Also they said to add task lighting and increase the ability of heat

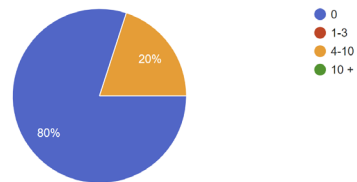
Have you been to Professor Dunham's Office?
10 responses



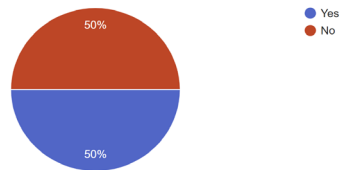
Is it easy to access the space?
6 responses



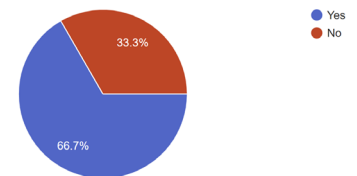
How many times have you been to Professor Dunham's office?
10 responses



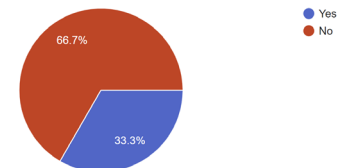
Is the office effective in terms of Natural Lighting?
6 responses



Is the office effective in terms of Artificial Lighting?
6 responses



Are the heat system and AC functioning?
6 responses

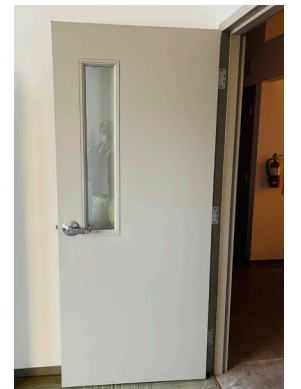
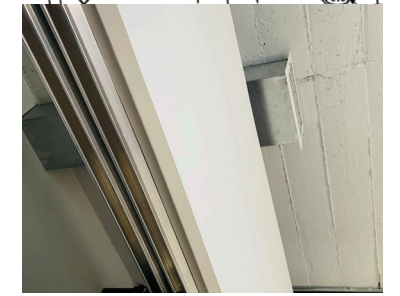
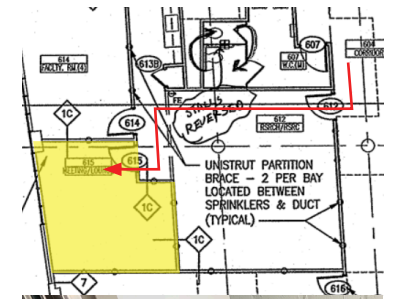


Challenges:

It is very hard to access to the space, which has to pass through two doors and make three turns to reach. For people who has never been to the space, it's a pain to look for it.

The Opening of the wall above the sliding doors are made after the construction was finished. To avoid conflicting with the vent duct and sprinkler pipes, it had been built with an opening, which is not very effective and not pretty.

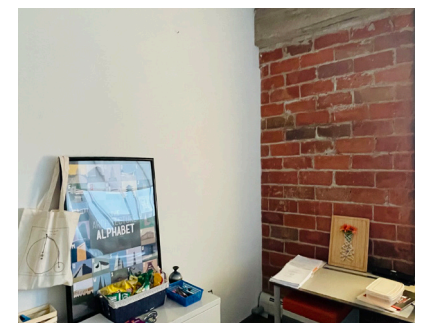
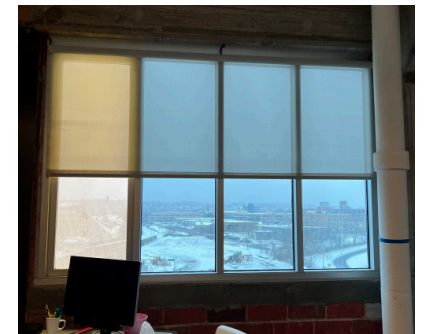
The access door of the office is violating ADA standards for doors, which takes more power to open and hold. This is very ineffective in design and is hard to the handicapped.



Opportunities:

The giant windows provides enough natural lighting even though it is facing west. It makes the artificial lighting very flexible and created more opportunities and changes.

The Exterior brick wall doesn't have any insulation layers on, which causes problems of heat loss and transfer, noise, and aesthetics. Since it needs to be done from scratch, there should be more choices to choose from based on the user's experience.



Design Problems:

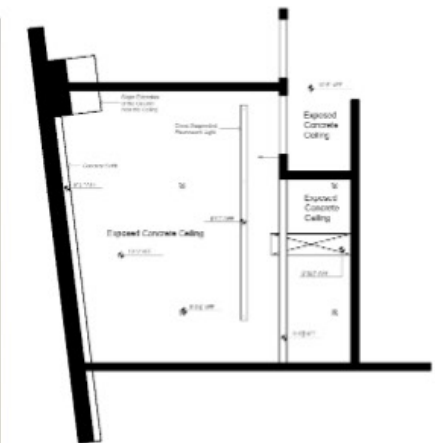
Problem 1: Not enough circulation in the space. The desk is disconnected from the space

Solution 2

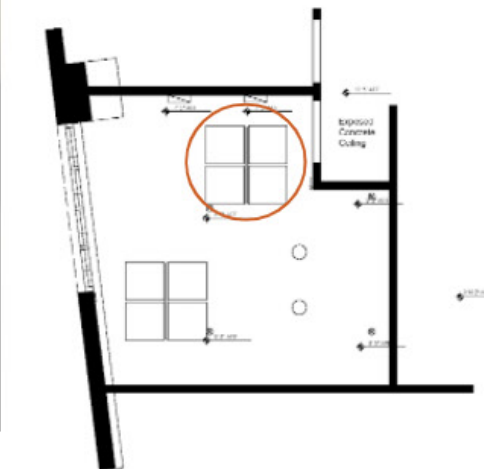
Acoustical Clouds were placed to combat the noise issues and absorb sound to provide better acoustics in the space. The addition to the office is meant to combat the noise from the classroom near Professor Dunham's office.



Existing office



Renovated Office



Design Problems:

Problem 2: The noise from the classroom is distracting for Professor Dunham while in the office. The acoustics in the room are not sufficient for working on tasks.

Solution 1

Changed the orientation of the I shaped desk to open the space more and make it more guest friendly. Before the room was more crowded and didn't have a lot of circulation in the space.

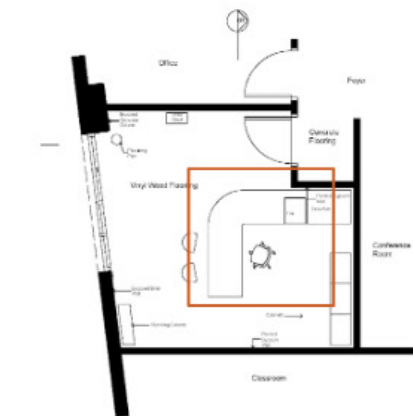


I added Entzo Calacatta Marble and it is both aesthetically pleasing and a durable and sustainable.

Existing office



Renovated Office



Design Problems:

Problem 3: The lighting needs improvement for overall function of the space it is not inviting.

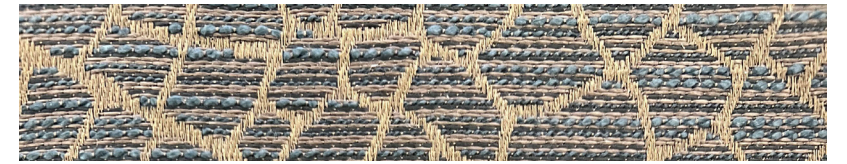
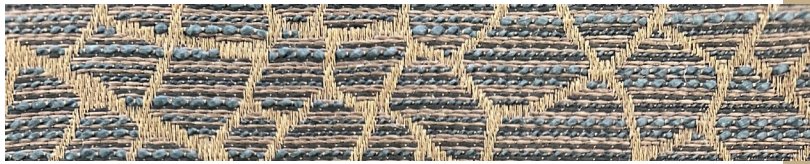
Solution 3

Also included LED suspended lights in between the Acoustical Clouds which add a warm glow and are sustainable. The Cylinder pendants is task lighting while working at the desk.



The wall picture lights add accent light to the space and serve to bring light to the pictures and space.

Materials Palette

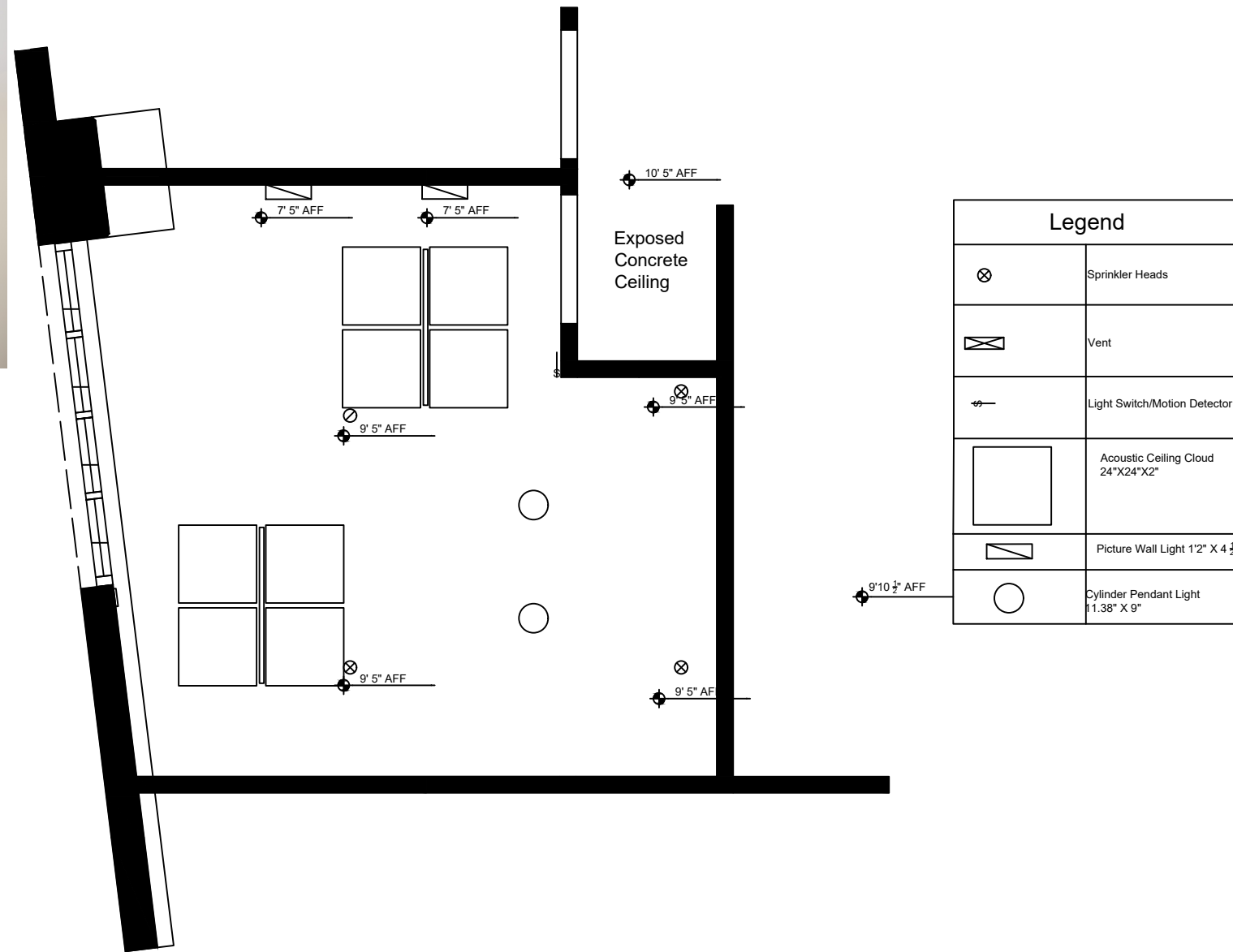


In this palette there are many neutrals and organic patterns and makes sure to be welcoming. I did this by making the space be a warm and well lit space, you are drawn further into the office by delicate textures and colors that instill a sense of calmness.

	Finish Name	Application
1	Greek Villa	Cabinet/Storage
2	Brick	Walls
3	Vinyl Wood	Flooring
4	Calyx by Architex	Chair
5	Gypsum	Ceiling
6	Cloth & Stone (Sherwin Williams)	Applied to Gypsum ceiling
7	Steel	Desk Legs

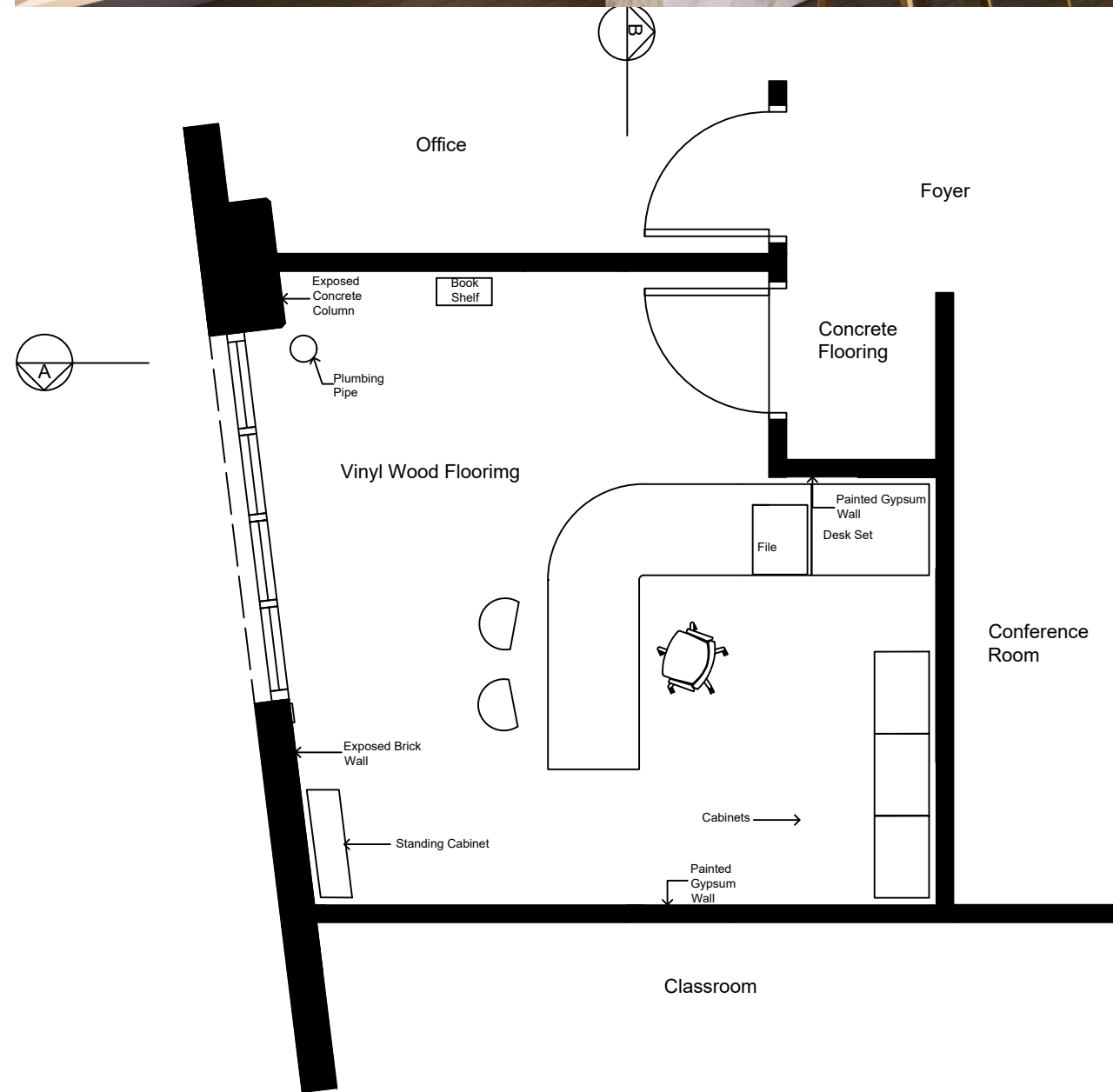


Proposed Reflected Ceiling Plan

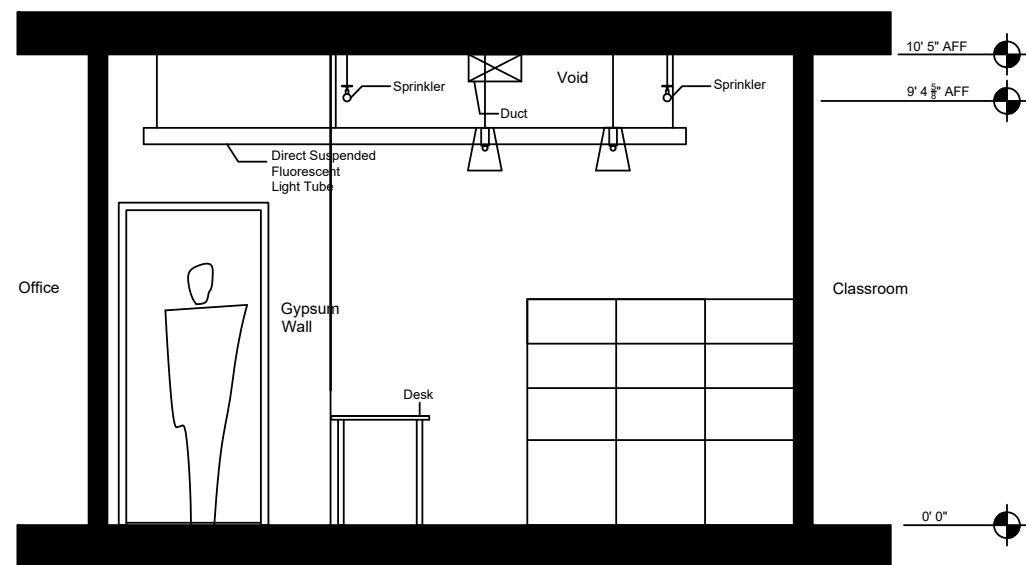
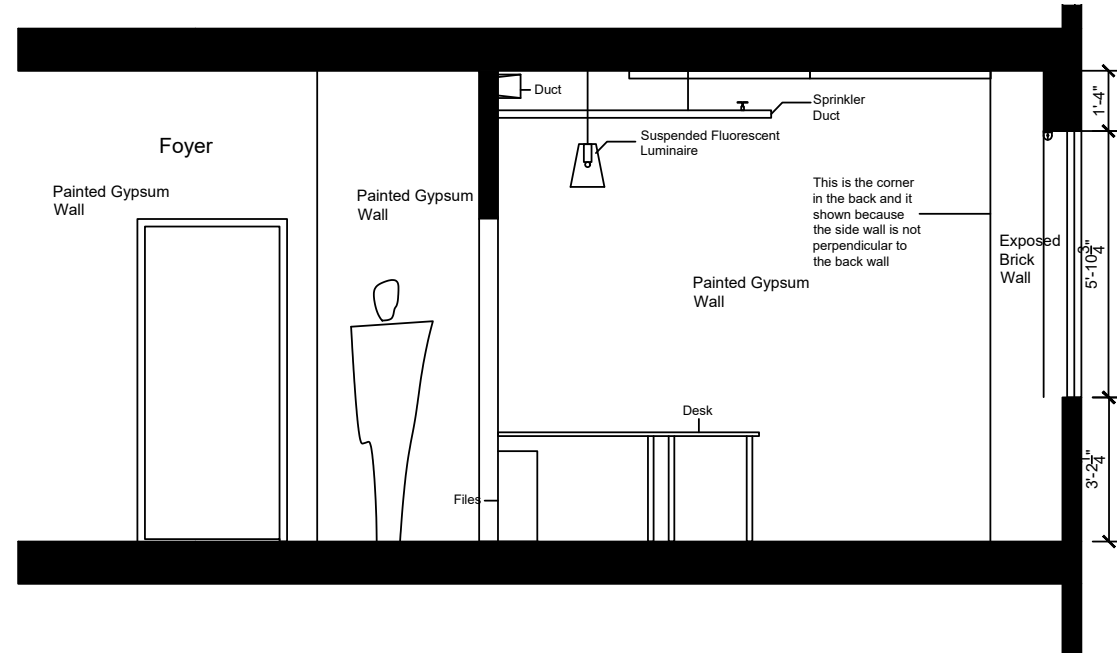


Legend	
	Sprinkler Heads
	Vent
	Light Switch/Motion Detector
	Acoustic Ceiling Cloud 24" X 24" X 2"
	Picture Wall Light 1'2" X 4 1/2"
	Cylinder Pendant Light 11.38" X 9"

Proposed Floor Plan

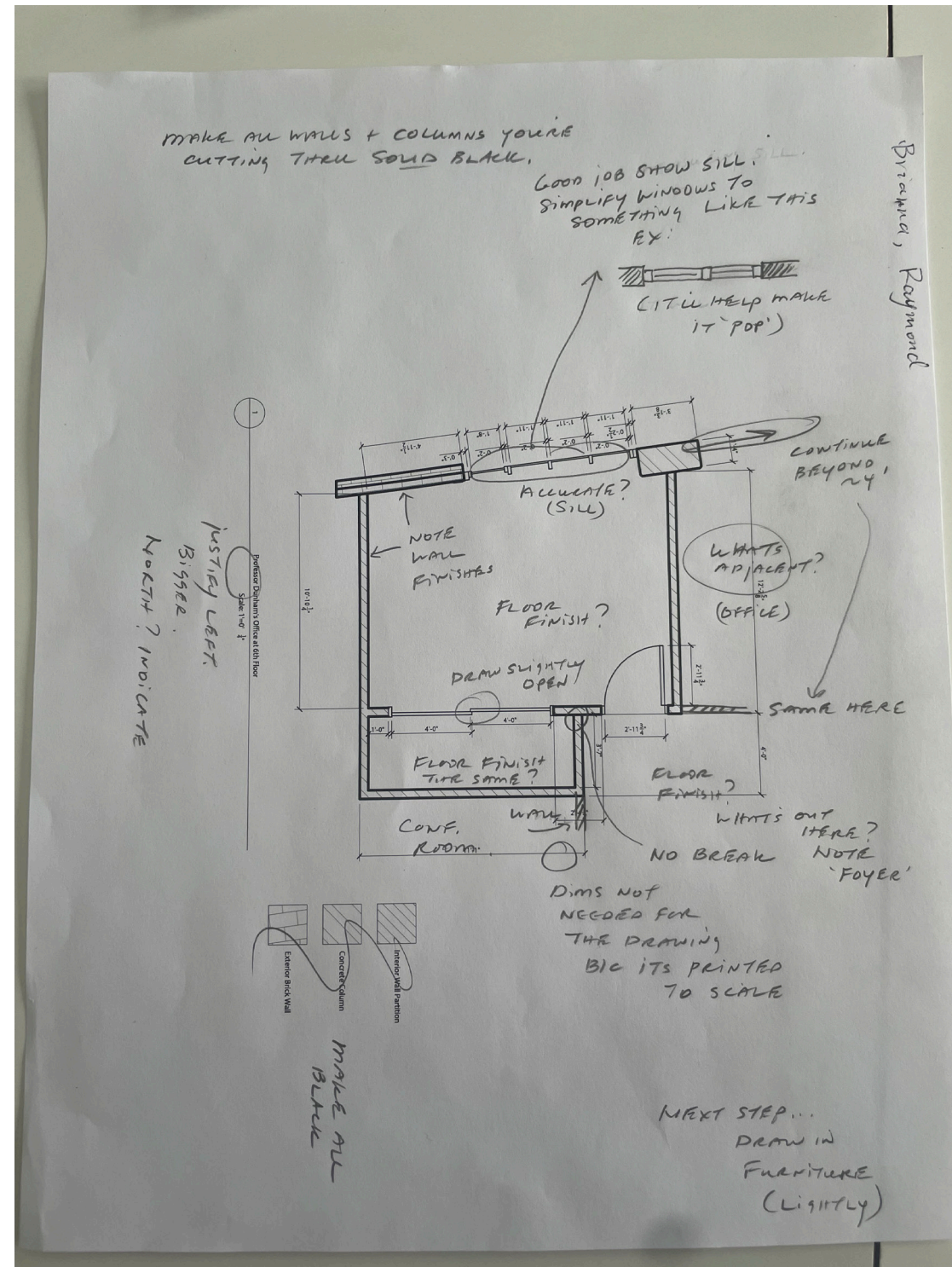


Proposed Sections



Redline Appendix

Checkpoint 1 February 9, 2022



Checkpoint 2 March 9, 2022

Research of Professor Dunham's Office

USERS / STAKEHOLDERS:
 - Students in class
 - Faculty (the group)
 - Prof. Dunham
 - Cleaning staff

Have you been to Professor Dunham's Office?
 10 responses
 80% Yes
 20% No

Is it easy to access the space?
 6 responses
 83.3% Yes
 16.7% No

How many times have you been to Professor Dunham's office?
 10 responses
 80% 1-3
 20% 4-10

Is the office effective in terms of Natural Lighting?
 6 responses
 50% Yes
 50% No

Is the office effective in terms of Artificial Lighting?
 6 responses
 66.7% Yes
 33.3% No

Are the heat system and AC functioning?
 6 responses
 66.7% Yes
 33.3% No

Is there a time of year or time of day that the room is not comfortable?
 6 responses
 66.7% Yes
 33.3% No

Is the place good for studying/working?
 6 responses
 66.7% Yes
 33.3% No

Challenges:
 It is very hard to access to the space which has to pass through two doors and make three turns to reach. For people who has never been to the space, it's a pain to loof for it.

Opportunities:
 The giant windows provides enough natural lighting even though it is facing west. It makes the artificial lighting very flexible and created more opportunities and changes.

What would you suggest to redesign for the space?
 3 responses
 n/a
 not applicable
 Make the space more easier to find
 add task lighting and increase the ability of heat
 not applicable

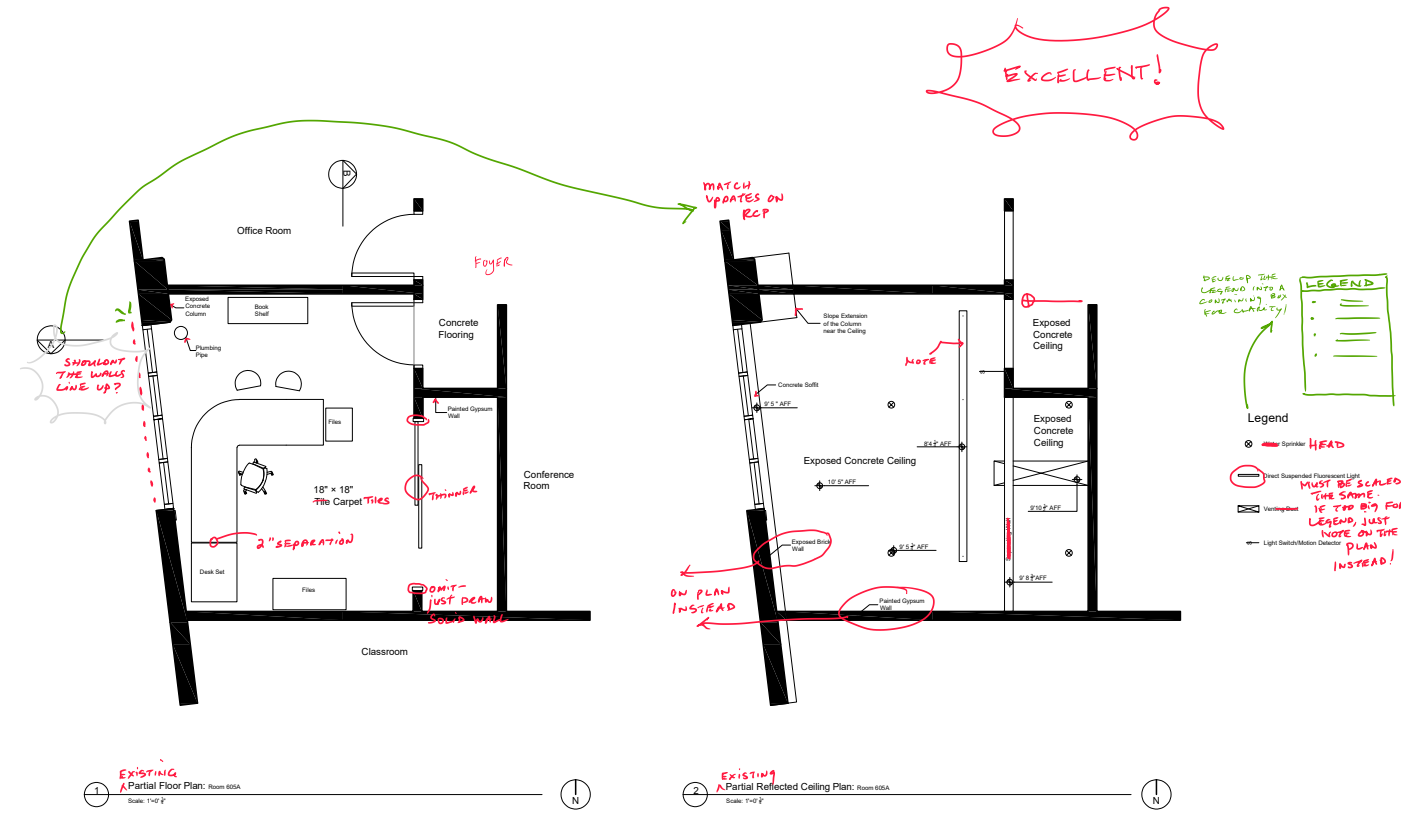
What do you think of the Design of her Room? Is a good Design?
 3 responses
 n/a
 not applicable
 Don't know
 yes
 It's ok
 Haven't been in
 No

What would you suggest to redesign for the space?
 3 responses
 n/a
 not applicable
 Make the space more easier to find
 add task lighting and increase the ability of heat
 not applicable

Handwritten notes and redlines:
 - "YOU DID NOT SAY ENOUGH PEOPLE TO COMMENT TO THE SPACE"
 - "CRACKS BECAUSE MEANING BECAUSE THE SHEDDING WAS UP"
 - "WANT TO SEE THE WAYS SHE MIGHT BE ABLE TO INTERPRET THIS QUESTION?"
 - "WANTING THAT INFO, IT HAD TO HAVE DRAWING OF"
 - "WHAT'S ADJACENT?"
 - "WHAT'S OUT THERE?"
 - "WHAT DOES THIS MEAN?"
 - "WHAT ARE WE LOOKING AT?"
 - "SHOULD BE DELETED BUT WOULD EXPERIENCE DATA + ANALYSIS."
 - "NOT FROM DUNHAM SHOULD BE MORE INTERESTING."
 - "WHAT ARE WE LOOKING AT?"
 - "FIRST ASK, WHAT TYPE OF WORK DO YOU DO HERE, AND WHY?"
 - "DESCRITIVE... MORE WE'LL INFO..."
 - "IT'S AN OFFICE! THAT'S WHAT WE'RE ASKING."
 - "WHAT TYPE OF WORK DO YOU DO HERE, AND WHY?"

Redline Appendix

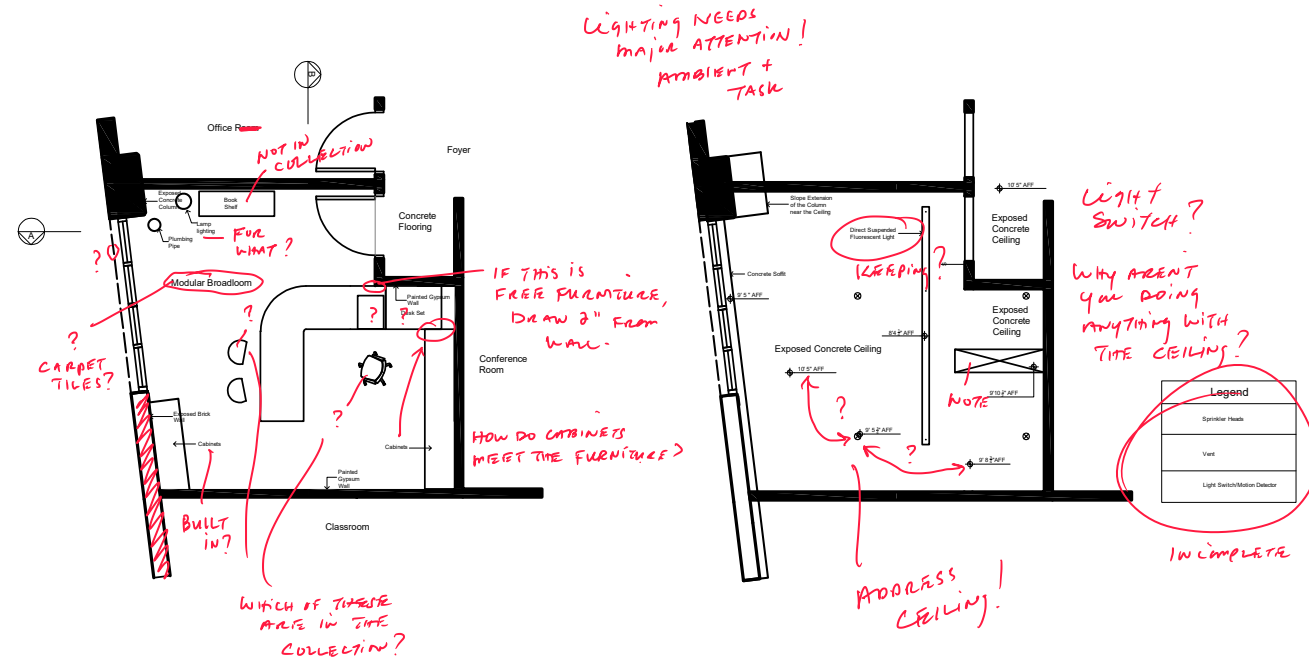
Checkpoint 3 March 20, 2022



EXCELLENT!

Checkpoint 4 April 20, 2022

NOT AT THE SAME SCALE AS SECTIONS, BUT IT SHOULD BE!
BOTH SHOULD BE 1/8" = 1'-0"



LIGHTING NEEDS MAJOR ATTENTION!
AMBIENT + TASK

LIGHT SWITCH?
WHY AREN'T YOU DOING ANYTHING WITH THE CEILING?

ADDRESS CEILING!

IN COMPLETE