

AZUMA HOUSE DESIGNED

BY: TANDO ANDO

The Azuma house is located in Sumiyoshi, which is a district in central Osaka in Japan. It was made in 1976 in a community that surrounds built terraced houses. The exterior of the building is made of concrete and the interior walls. Other materials used are wood and glass used for the building structure. It is made in the structure of a cube and is long because it is located in a small lot. The interior showcases two floors in the house and is split in two parts. The first floor has a living room, dining room with kitchen and bathroom, along with two bedrooms on the second floor. Ando used outdoor consercatory in between the house to provide light from outside and fresh air for people in the interior.



Site Map



Front View



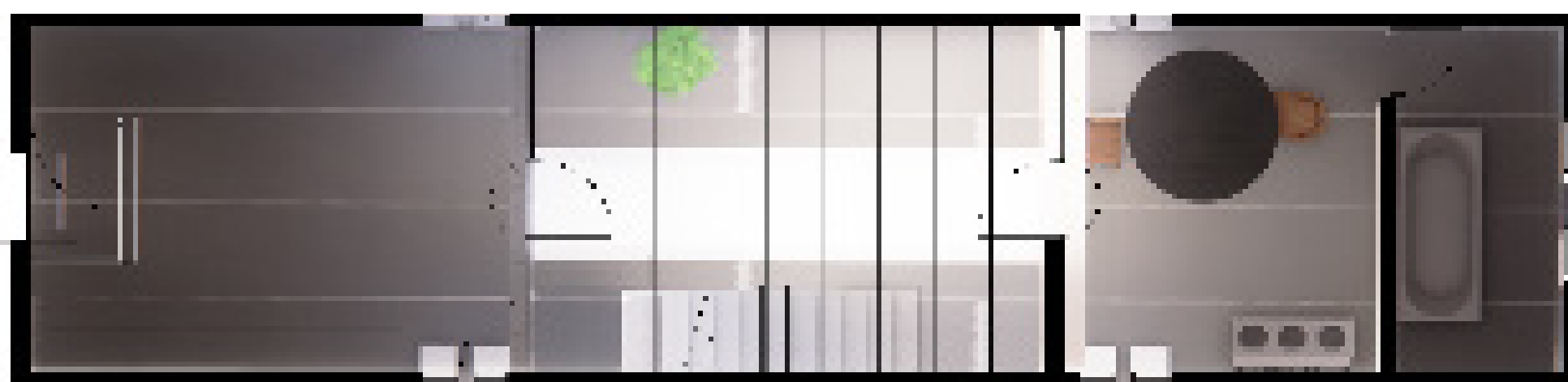
Second Floor Bedroom



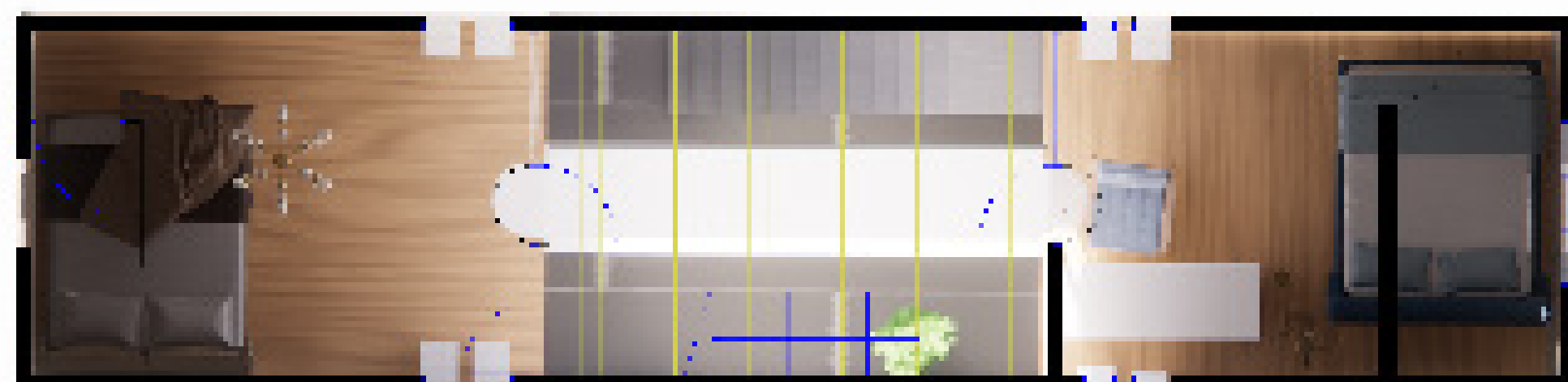
Stairwell view



Transverse Section



First Floor Finished Floor



Second Floor Finished Floor



Longitudinal Section

AZUMA HOUSE



The Azuma house is located in Sumiyoshi, which is a district in central Osaka in Japan. It was made in 1976 in a community that surrounds built terraced houses. The exterior of the building is made of concrete and the interior walls. Other materials used are wood and glass used for the building structure. It is made in the structure of a cube and is long because it is located in a small lot. The interior showcases two floors in the house and is split in two parts. The first floor has a living room, dining room with kitchen and bathroom, along with two bedrooms on the second floor. Ando used outdoor consercatory in between the house to provide light from outside and fresh air for people in the interior.

